

TE RUNANGA O TE RARAWA

2010 ANNUAL REPORT





Contents

Vision Statement 2

Mission Statement..... 2

Te Rohe o Te Rarawa: Te Rarawa Kai Whare 2

Traditional Boundaries of Te Rarawa Iwi 2

Te Runanga o Te Rarawa Organisational Structure 3

Nga Marae o Te Rarawa..... 5

Te Runanga o Te Rarawa Executive 5

Chairman’s Foreword 6

Chief Executive Officer’s Foreword 8

Treaty Claims..... 11

Report on 2010 Annual Plan Outcomes..... 13

 Te Rarawatanga 14

 Te Rarawatanga 15

 Hapu Development..... 17

 Hapu Development..... 18

 Economic Development 19

 Education and Training; Matauranga 20

 Education and Training; Matauranga 21

 Health and Wellbeing 22

 Health and Wellbeing 23

 Political..... 24

 Runanga Development..... 25

 Runanga Development..... 26

 Environment; Te Kaitiakitanga o te taiao..... 27

 Environment; Te Kaitiakitanga o te taiao..... 28

 Environment; Te Kaitiakitanga o te taiao..... 29

 Environment; Te Kaitiakitanga o te taiao..... 30

Whakamaharatanga - 2010..... 31



VISION STATEMENT

Te Rarawa Whanau, Hapu and Iwi strong in their identity, active with their marae, and making a contribution.

MISSION STATEMENT

The mission of Te Runanga o Te Rarawa is to provide the means for Whanau, Hapu and Marae to develop their resources within each rohe to enhance the wellbeing of all of Te Rarawa.

TE ROHE O TE RARAWA: TE RARAWA KAI WHARE

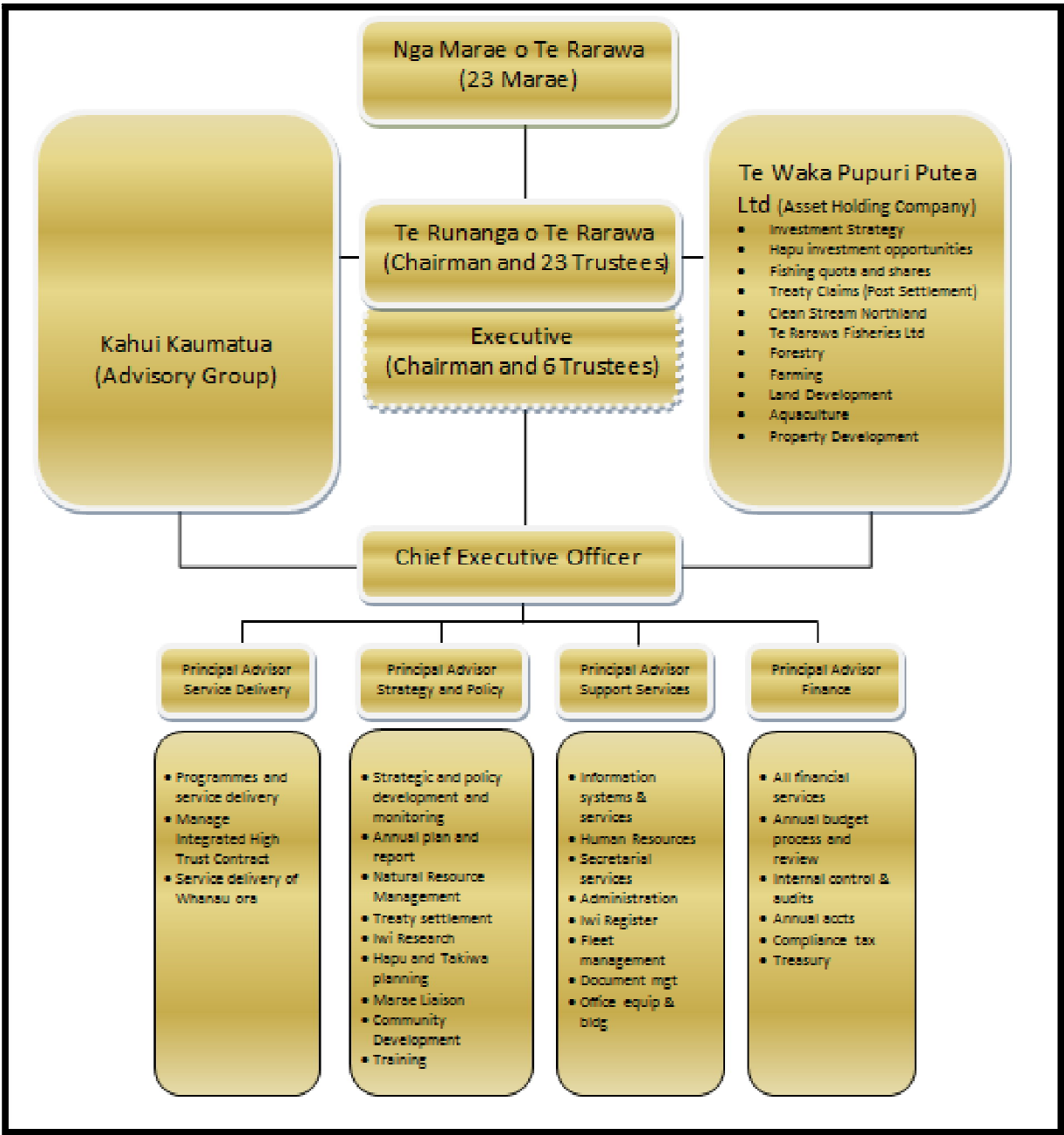
I timata te rohe o Te Rarawa mai i Te Puna o Hokianga. Ka turukinahia ki tona awa, tae noa kite rohe o Mangataipa i tu ana i te tau o Maungataniwha. Makona ka haere ma runga nga pae maunga o Raetea, mai ki te rohe o Takahue. Ka turukina i te awa o Pamapurua tae atu ki Maimaru; a ka tae ki Awanui. I reira ka whiti atu ki te taihauauru ki Hukatere. Ka titiro ki Te Reinga, ki Te Rerenga Wairua; Ka poroporoaki ki a ratou ma kua haere atu i tua o te arai. Ka huri tuara, ka hoki ma runga i Te Oneroa-a-Whaaro, ara, Te Oneroa-a-Tohe, ki Ahipara, ki Tauroa; a ka whiti i te wahapu o Owata tae atu ki Whakakoro, ka titiro ki Te Kauae-o-Ruru-Wahine; roanga atu i te akau o Mitimiti, i nga onepu o Matihetihe me Te Rangi, a tae atu ki Te Puna o Hokianga Whakapau karakia. Na ka mau nga pangataonga o Te Rarawa Kai Whare.

TRADITIONAL BOUNDARIES OF TE RARAWA IWI

Te Rarawa Iwi encompasses the areas beginning from Hokianga, eastward following the Hokianga River to Mangataipa, situated at the base of Maungataniwha. Northward along the ranges of Raetea to Takahue and following down the Pamapurua River to Maimaru, across to Awanui and westward to Hukatere on the Ninety-Mile Beach. Back down the Beach to Ahipara, southward to Tauroa, Owata and Whangape and down the coastline to Mitimiti and back to Hokianga, being the southern boundary of Te Rarawa Iwi.



TE RUNANGA O TE RARAWA ORGANISATIONAL STRUCTURE



A: Te Rarawa
Ko Taumatamahoe te maunga,
Ko Tangonge te wai,
Ko Ngati Te Ao, Te Tahaawai, Te Uri o Hina nga hapu,
Ko Te Rarawa te marae

B: Te Uri o Hina
Ko Taumatamahoe, ko Kokohuia nga maunga,
Ko Tangonge te moana,
Ko Tipaki ko Wairoa nga awa,
Ko Te Uri o Hina, Ngati Te Ao, Te Tahawai nga hapu,
Ko Te Uri o Hina te marae

C: Wainui
Ko Pukenamu te maunga,
Ko Wainui te awa,
Ko Ngati Moetonga Te Rokekaa nga hapu,
Ko Wainui te marae

D: Roma
Ko Whangatauatia te maunga,
Ko Karikura te moana,
Ko Te Ohaki te whare tupuna,
Ko Tinana te waka,
Ko Roma te marae

E: Korou Kore
Ko Whangatauatia te maunga,
Ko Karikura te moana,
Ko Tinana te waka,
Ko Ngati Moroki te whare tupuna,
Ko Wikitoria te wharekai,
Ko Korou kore te marae

F: Manukau
Ko Orowhana te maunga,
Ko Rangiheke me Te Uwhiroa nga awa,
Ko Nga Tai o te Uru te moana,
Ko Ngati Hine me Te Patu Pliinaki nga hapu,
Ko Manukau te marae

G: Rangikohu
Ko Mangamotu te Maunga,
Ko Tangiwai te Awa,
Ko Ruia Te Aroha,
te whare tupuna,
Ko Tuia i Roto te whare kai,
Ko Rangikohu te marae

H: Owkata
Ko Te Rawhitiroa te maunga,
Ko Puhata Wairere te awa,
Ko Owkata te wahapu,
Ko Nga Tai o e Uru te moana,
Ko Kingi Hori te whare tupuna,
Ko Ngati Torotoroa, Ko Tahukai,
Ko Te Popotonga hapu

I: Te Kotahitanga
Ko Whakakoro te maunga,
Ko Awaroa te awa,
Ko Whangape te moana,
Ko Ngati Haua te Hapu,
Ko Te Kotahitanga te marae

J: Morehu
Ko Ongaro te maunga,
Ko Rotokakahi te awa,
Ko Kurahaupo te whare tupuna,
Ko Waiomionga te Wharekai,
Ko Te Uri o Tai te Hapu

Nga Marae o Te Rarawa



Nga Hapu Marae Trustees 2010

Korou Kore Marae , Ahipara Trustee: Sid Nathan	Taiao Marae , Pawarenga Trustee: Malcolm Peri
Matihetihe Marae , Mitimiti Trustee: Henry Tahana	Tauteihihi Marae , Kohukohu Trustee: Maiki Smith
Morehu Marae , Pawarenga Trustee: Frank Herbert	Te Arohanui Marae , Mangataipa Trustee: Jemaima Winikerei
Motuti Marae , Motuti Trustee: Joan Daniels	Te Kotahitanga Marae , Whangape Trustee: Richard Murray
Ngai Tupoto Marae , Motukaraka Trustee: Wendy Henwood	Te Rarawa Marae , Pukepoto Trustee: Dixon Motu
Ngati Manawa Marae , Panguru Trustee: Georgina Neho	Te Uri o Hina Marae , Pukepoto Trustee: John Walsh
Ohaki Marae , Pawarenga Trustee: Sam Tecklenburg	Waihou Marae , Waihou Trustee: Turi Te Hira
Owhata Marae , Owkata Trustee: Ra Heke	Wainui Marae , Wainui Trustee: Tame Murray
Pateoro Marae , Te Karae Trustee: Watene Barber	Waiparera Marae , Rangī Point Trustee: William Bercich
Pikiparia Marae , Kohukohu Trustee: Patariki Briggs	Waipuna Marae , Panguru Trustee: Abraham Witana
Rangikohu Marae , Herekino Trustee: Katie Murray	Whakamaharatanga Marae , Manukau Trustee: John McLean
Roma Marae , Ahipara Trustee: Catherine Davis	

L: Te Taiao
Ko Taiao Makora te maunga,
Ko Awaroa, ko Rotokakahi nga awa,
Ko Whangape te moana,
Ko Kahi, Ko Mataatua nga Whare,
Ko Te Huhu te tupuna,
Ko Te Uri o Tai te Hapu,
Ko Taiao te marae

K: Te Ohaki
Ko Hinerakei te maunga,
Ko Whangape te moana,
Ko Maru o te Huia raua,
Ko Te Urunga mou tonu,
nga whare tupuna,
Ko Te Oranga te whare kai,
Ko Te Uri-o-Tai te hapu,
Ko Ohaki o Pawarenga te marae

M: Matihetihe
Ko Tarakeha te Maunga,
Ko Moetangi te awa,
Ko Te Akau te moana,
Ko Taomaui, Ko Hokoheha nga Hapu,
Ko Matihetihe te marae

W: Mangataipa
Ko Mereana Pai te maunga,
Ko Te Arohanui te Whare,
Ko Hokianga nui a Kupe te moana,
Ko Te Ihu Tai te hapu,
Ko Mangataipa te marae

V: Pateoro
Ko Maungapohatu te maunga,
Ko Te Karae te awa,
Ko Hokianga nui a Kupe te moana,
Ko Te Ihutai te hapu,
Ko Pateoro te marae

U: Pikiparia
Ko Whakapiki te maunga,
Ko Ngaru Nui te whare tupuna,
Ko Hokianga nui a Kupe te moana,
Ko Te Ihu Tai Te Hapu,
Ko Pikiparia te marae

T: Tauteihihi
Ko Rangikawarawara te maunga,
Ko Hokianga nui a Kupe te moana,
Ko Te Ihu Tai Te Hapu,
Ko Tauteihihi te marae

S: Ngai Tupoto
Ko Rakautapu te maunga,
Ko Tapuwae te awa,
Ko Hokianga nui a Kupe te Moana,
Ko Ngahuia te whare tupuna,
Ko Ngai Tupoto te hapu,
Ko Ngai Tupoto te marae

R: Motuti
Ko Tamatea te maunga,
Ko Waipapa te awa,
Ko Hokianga nui a Kupe te moana,
Ko Ngati Te Maara,
Ko Ngati Tamatea nga hapu,
Ko Motuti te marae

Q: Ngati Manawa
Ko Panguru te maunga,
Ko Whakarapa te awa,
Ko Hokianga nui a Kupe te moana,
Ko Ngati Manawa te hapu,
Ko Ngati Manawa te marae

P: Waipuna
Ko Panguru te maunga,
Ko Whakarapa te awa,
Ko Hokianga nui a Kupe te moana,
Ko Waiariki, Ko Kaitutae,
Ko Ngati Manawa nga hapu,
Ko Waipuna te marae

O: Waihou
Ko Te Reinga te maunga,
Ko Waihou nui a rua te awa,
Ko Hokianga nui a Kupe, te moana,
Ko Ngati Te Reinga, Ko Nga Te Uri o Te Aho, Ko Ngati Moroki nga hapu,
Ko Waimirangi te marae

N: Waiparera
Ko Ngatokimatawhaorua te waka,
Ko Tauwhare, Ko Pukerangatira, nga maunga,
Ko Hokianga te awa,
Ko Te Moana nui a Kiwa te moana,
Ko Nukutawhiti te whare tupuna,
Ko Ruamamao te wharekai,
Ko Waiparera te marae

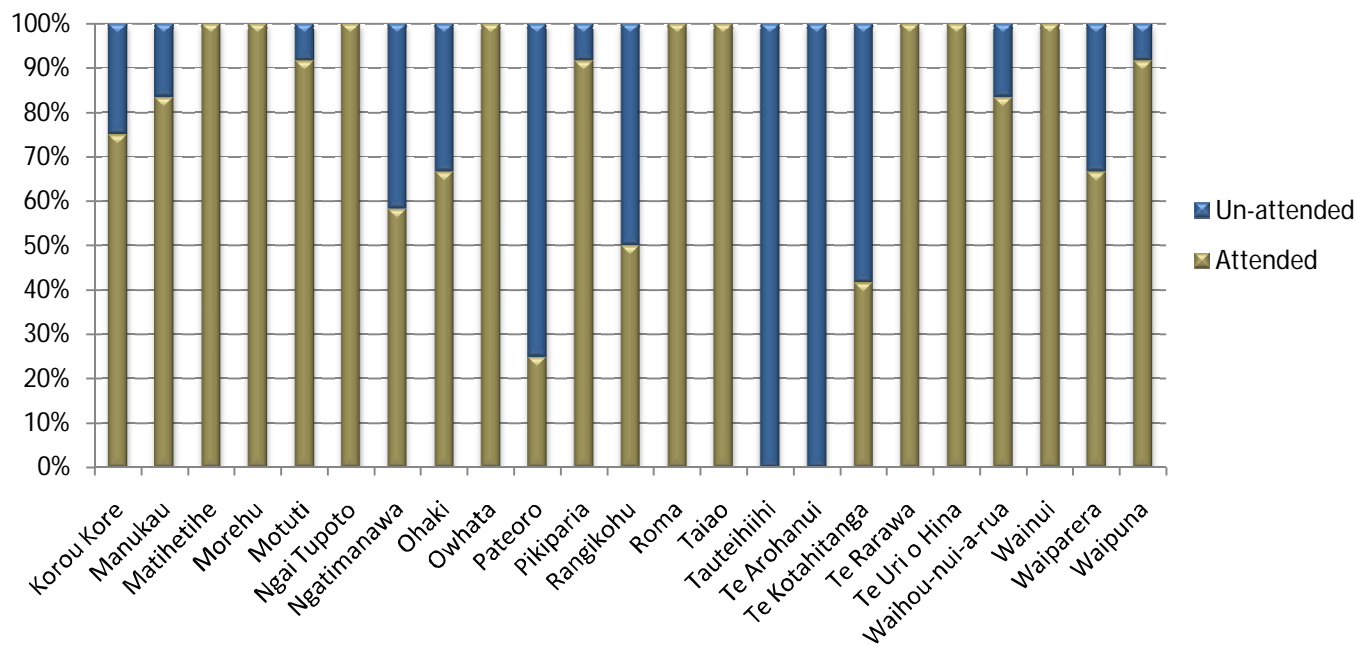


TE RUNANGA O TE RARAWA EXECUTIVE



Runanga Executive members at Ngati Manawa Marae, Panguru
Left to Right: Ra Heke-Laupa, Sam Tecklenberg, John McLean, Haami Piripi, Katie Murray, Wayne Te Tai, Frank Herbert

Marae Trustee representation at the 12 Hui-a-Marama held during 2010





CHAIRMAN'S FOREWORD



E nga kauae rangatira, e nga rarangi maunga, e nga pa harakeke a o tatou tupuna tihei mauriora. E mihi kau ana ki o tatou mate i hinga mai na i runga i o tatou marae. Haere e nga mate haere ki te kainga tuturu mo te tangata. Mo tatou te hunga ora tenei te mihi, tenei te karanga, tenei te inoi ki a tatou katoa i runga i te ahuatanga o to tatou nei waka a iwi, ana ko Te Runanga o Te Rarawa. Tukuna kia rewa, tukuna kia haere, kia tika ra ano ki mua, ki muri aa ka tutuki nga tumanako a o tatou matua tupuna.

Once again it gives me great pleasure to report on the state of our organisation which we as Te Rarawa have chosen as our waka to take us into this new millennium. The Runanga turned 24 last year and this represented a milestone in iwi development and a point from which it is now too far for us to return to the old days of factional infighting about the right to lead. In this respect we are bound together by blood, association and affiliation to an iwi entity that is actually a new expression of our tupuna paa and in today's world acts as our sanctuary from the pakeha paradigm and our platform for achieving our potential.

Organisational Health

Overall our Runanga is faring well within an environment of an economic recession and belt tightening by Government and financial agencies. Financial sustainability is fundamental to organisation survival and this is a very strong focus of the leadership within the Runanga. Unless we are viable we are of no use to our constituents and we have achieved this through a number of means. First we have maintained the social services arm of our organisation (Te Oranga) by entering into a High Trust Integrated Contract with the government. This agreement enables us to gain cost efficiencies through one single contract covering several agencies and shifts our focus from outputs to outcomes and has positioned us well to participate in the Whanau ora initiative.

Another aspect of our ongoing development has been the consolidation of our financial interests and the establishment of a commercial hub within the Runanga structure. Over the year we have continued to divest assets to our commercial arm and employed skilled staff to prepare for the receipt of the significant range of assets which we expect to get back as redress for historical Tiriti o Waitangi claims. These include LandCorp farms, Aupouri State Forest and a number of properties within our Rohe. In addition our commercial arm has taken over the management of current interests for example Clean Stream Northland and provided internal due diligence on potential investment opportunities.

The Governance of the Runanga lies with its Marae delegates who through an Executive body manage the relationship with our constituent Marae including the distribution of funds derived from fisheries income and the implementation of our student scholarship programme. We have placed more emphasis over the year on building our registration database and once properly established in conjunction with our Marae this will form the whariki of our constituency worldwide enabling better and easier participation by individuals.

We still have a lot of work to do to retain the confidence of our Hapu in our iwi structure but this is an ongoing task that requires effort everyday by every member of our organisation and while this mandate continues, the overall health of our organisation will also improve.

**Issues**

The biggest issues that have faced us this year have been around claim resolution and getting to the point where we can agree upon a settlement. Trying to come up with a package that satisfies all claimants is virtually impossible within the negotiation process and there are always new people, ideas and opportunities that emerge which add further complexity to the process. However we have almost arrived at a point where we can recommend a settlement and if all goes well we will have that ready for consideration by our people by the end of 2011. Other issues have also emerged around the distribution of settlement and we are about to review our current principles which separates the cash quantum into three equal areas. These are the individual marae themselves, investments through our commercial arm and the governance function of the Runanga. Once reviewed, a lot of work will need to be done to build the mechanisms required to enable effective distribution to the Iwi of Te Rarawa including the generations yet to come.

On another front we have been battling to re-establish Kaitiaki roles and responsibilities among our natural resources and we have put a lot of effort and resource into Hapu planning, historical research and Kaitiaki committees which we have provided infrastructure for. Once again the claim settlement will provide greater opportunities for Kaitiakitanga especially in relation to Conservation Estate and the Takutaimoana.

Achievements

During the year we have really broken the back of Treaty settlement work and that has been very satisfying especially with the increasing collaboration between the four iwi of the peninsula. This has proved to be really empowering for all concerned and is the basis upon which we are now working together on Treaty settlement projects. I am proud to be involved in the Hiku Forum and to be associated with the leadership of our neighbouring iwi.

Meeting the challenge of Whanau Ora was also an excellent achievement and the improving relationship between the Runanga and Hiku o Te Ika Health has led to better and improved services to our people. This is being complemented by Crown agreement to an accord with the four iwi in the Forum which provides better monitoring and evaluation of services that are delivered through government agencies.

Finally our commercial arm has begun to exercise some of its acumen and expertise in the management and investment of our financial resources and this has been uplifting. Our waste management business partnership is booming and we recently were part of a new initiative between our fishing company (comprising of twelve iwi nationally), Aotearoa Fisheries Ltd and Sanford Ltd to collaborate on the fishing, processing and marketing of our fish quota. As the various arms of our new type of Paa begin to come together and work strategically with each other we will see an increase in opportunities for our new generations and this in turn will create enterprise and revenue which provides our bottom line of sustainability in the Runanga.

Ma te mahi tahi, ma te whakaaro kotahi ka ora ai te iwi e hoa ma, na reira kia kaha, kia uu, kia manawanui

Haami Piripi
Chairman



CHIEF EXECUTIVE OFFICER’S FOREWORD

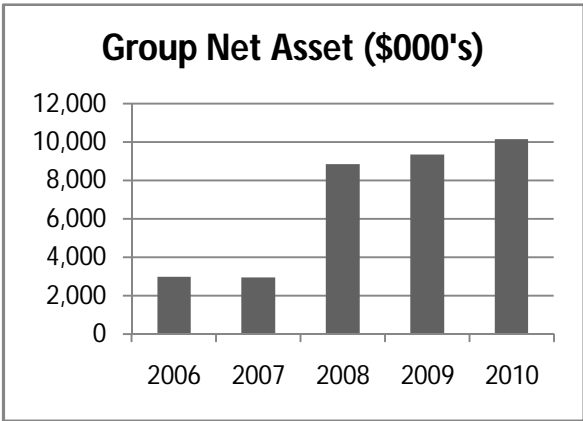
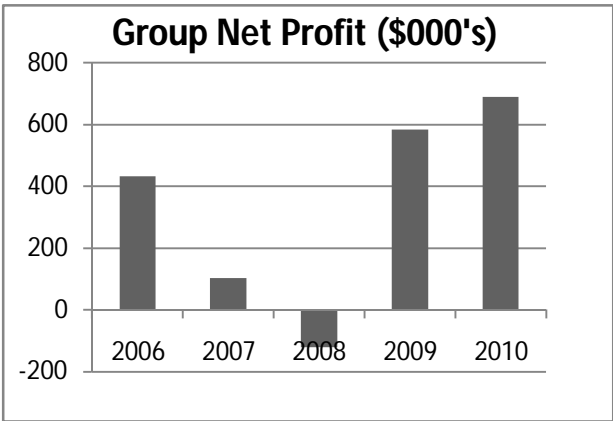


Once again I am pleased to report an unqualified opinion over our group financial statements for the year ended 2010. This is the first year that the Group was required to comply with “International Financial Reporting Standards” (“IFRS”).

A consolidated net profit of \$690k was earned for the year ended 31 December 2010:

• Runanga (governance & operations)	\$272k
• TWPP Ltd (consolidated)	<u>\$418k</u>
	<u>\$690k</u>

This is a pleasing result highlighting the continual stable financial performance of the Group.



High Trust Integrated Contract

Another stabilising factor for the year was the signing of the High Trust Integrated Contract. Signed in June 2010, Te Runanga o Te Rarawa became the first Non-Government Organisation in the country to sign a multi-agency High Trust Integrated Contract.

The advantages of High Trust Integrated Contracts are:

- Fostering collaboration between government agencies so that each agrees to and measures similar outcomes
- Finding more effective responses to produce a “whole solution” for whānau
- Simplifying the contracting process for both providers and funders
- Consolidating quality assurance, audit and reporting processes
- Using our own knowledge more effectively in service development
- Promoting more effective use of resources
- Greater opportunities for strategic planning and staff retention through longer contract terms



Our appreciation to Richard Wood (Deputy Chief Executive, Ministry of Social Development) and his team for their tremendous amount of work to put this in place.

Te Tai Tokerau Whānau Ora Collective

During 2010 “Expressions of Interest” (EOI) were called to deliver Whānau Centred Services.

Te Runanga o Te Rarawa entered into an EOI Collective with Te Tai Tokerau Maori Health providers that we have had an association with for over 10 years. They are:

- Whakawhiti Ora Pai
- Te Hauora o Te Hiku o te Ika
- Ngati Hine Health Trust; and
- Kia Ora Ngati Wai

In October the Collective was notified that we were successful with the EOI process and would proceed to the next stage and develop a “Programme of Action”. This continues to be work in progress.

Whānau Ora Action Research

Following on from entering into the Whanau Ora Collective, in December the Iwi Research and Development Group were successful in their bid for Action Research of Whanau Ora with a number of providers in Te Tai Tokerau.

Acknowledgements:

Principal funders to Te Runanga o Te Rarawa are:

- Ministry of Social Development
- Northland District Health Board
- Ministry of Health
- Housing New Zealand Corporation
- Ministry of Education
- Te Puni Kokiri
- Te Tai Tokerau Primary Health Organisation
- Office of Treaty Settlements
- Crown Research Forestry Trust

Other Acknowledgements:

- Aotearoa Fisheries Ltd (AFL) who have supplied pataka kai to nga whanau o Te Rarawa for tangi. 15 of the 23 marae of Te Rarawa benefited from this support, a number receiving more than once.
- Te Tai Tokerau Iwi Chief Executive Consortium
- Community & Business Environmental Centre (CBEC)
- Clean Stream Northland
- Office of Treaty Settlements
- Crown Forestry Rental Trust



Scholarship Sponsors

- Joan Metge
- Pacific Law
- Te Waka Pupuri Putea Ltd
- Clean Stream Northland

Summary

My thanks to the Runanga Chairman, Trustees and Staff for the tremendous effort and support given during 2010.

Special remembrance to Clara Norman and Rebecca More, valued staff members and whanaunga, who both passed away in 2010.

Kevin Robinson
Chief Executive Officer



TREATY CLAIMS

Te Hiku Forum Overlapping Claimant Interests

2010 was a Milestone year, with the five Te Hiku Iwi signing an Agreement in Principle (AIP) with the Crown in January. The AIP set the framework for the ultimate Deed of Settlement (DoS) on overlapping iwi claims interests.¹ Additionally, the Te Hiku AIP enabled each iwi to negotiate their separate iwi-exclusive cultural matters with the Crown, thereby also producing in a parallel process five individual, but related, AIPs.

However, shortly after the AIP signing, Ngāti Kahu exercised its right to 'take a break' from the Forum so it could re-focus on its Iwi-specific DoS drafting. While the full implications for the negotiations were unclear, the remaining Forum iwi continued on with their intense negotiating work program with the Crown. The redress areas progressed included:

Te Oneroa a Tohe/ Beach

The Forum engaged with Government Agencies and Local Councils to gain a better understanding of each other's responsibilities over and aspirations for our coastal areas. The Crown produced a draft Iwi-Crown 'beach governance and management' proposal, but it fell way short of Iwi expectations and negotiations to improve the proposal continued. The Forum notified the Crown of the Iwi desire to include in our DoS a rohe moana around our coastal areas.

Conservation Lands

The Forum progressed negotiations for a shared Iwi-Crown governance and management mechanism for these sites. Providing a "Korowai" for the enhancement of conservation, and based on an on-going Te Tiriti/Treaty relationship, the redress would support Te Hiku Iwi in exercising our kaitiakitanga over these Lands. It would also reflect the significance of these lands to Te Hiku Iwi, the Crown, and the wider public.

The Social Development Accord

The Forum developed Accord discussion papers assisted by feedback from local Māori Providers. These were re-crafted by Crown officials into a more detailed paper for Government Ministers' consideration.

Commercial

The Crown and the Forum continued valuation work on the Aupōuri State Forest and Kaitaia commercial properties: e.g. the Police Station, Post Office, and Court House. Simultaneously, the establishment of an Iwi Holding Body for the commercial properties was considered. The Forum also engaged with Landcorp to build a strong collaborative working relationship as the future landowners of the Sweetwaters, Cape View, Te Raite and Te Karae farms.

Te Rarawa-Specific Claims Negotiation Matters

Negotiations progressed with Ngai Takoto regarding Sweetwaters land allocation. The Negotiators considered a mechanism for returning Te Karae Farm ownership to Te Ihu Tai, while maintaining an Iwi management role. Crown Forestry Rental Trust-funded maps were also prepared to compliment the Te Rarawa Historical Account in the DoS.

¹A copy can be downloaded at <http://www.tehiku.maori.nz/documents>.



Foreshore and Seabed

Te Rarawa negotiations were suspended by the Crown in 2009 to allow a review of the Foreshore and Seabed Act 2004. The activity carried out during 2010 by Te Runanga o Te Rarawa has been to maintain our rights over the Foreshore and Seabed and all natural resources, minerals within the rohe of Te Rarawa.



Roma Marae, Ahipara
Signing of Te Hiku Iwi Agreement In Principle



REPORT ON 2010 ANNUAL PLAN OUTCOMES

This Annual Report sets out what Te Runanga o Te Rarawa proposed to achieve from the 2010 Annual Plan. This section reports on the integrated governance and operational approach to their achievements over the 2010 period.

**Te Reo - Te Reo is heard and spoken across Te Rarawa communities**

Outcomes for 2010	Status
A Te Rarawa Plan that identifies a set of strategic goals to improve levels of Te Reo in Te Rarawa communities over the next 10 – 15 years is in place.	<p>Carried forward to 2011 - An assessment of the existing Te Reo strategy was carried out. It was decided to develop this strategy alongside the Education Strategy which will be worked through and completed in December 2011.</p> <p>Achieved - A Memorandum of Understanding has been entered into with the Ministry of Education and a contract agreed to develop these strategies.</p> <p>Achieved - The Runanga supported staff to complete the level 3 Te Ara Reo course.</p>

Te Rarawatanga

Te Rarawa whanau and hapu have a strong identity grounded in our history and tikanga

Marae Roles: Hapu have the necessary people to fulfil the roles of the marae

Outcomes for 2010	Status
Support provided to marae to fulfil roles related to effective operational management, tikanga and kaupapa	Achieved - Staff are encouraged to participate and contribute to fulfil roles and progress of nga marae o Te Rarawa where and when appropriate.

Participation: Regular events are held that foster a sense of belonging and reaffirm who we are

Outcomes for 2010	Status
Te Runanga supports Te Rarawa Hapu/marae and iwi events	<p>Achieved - Active participation and contribution is provided by staff to develop promotional material and activities to support nga hapu/marae/iwi events.</p> <p>Te Rarawa was successful in their bid to host the Taitokerau Sports Awards in 2011. A festival celebrating Te Rarawa will lead up to the evening with a combination of events that will include sports, film and the arts.</p>

Leadership Development: Te Rarawa whanau are supported to build leadership qualities

Outcomes for 2010	Status
Te Runanga o Te Rarawa has in place a Leadership Development Plan	Carried over to 2011 – This was carried over into the Education Strategy and youth development initiatives.

**Matauranga: Our history, whakapapa and knowledge is promoted and used**

Outcomes for 2010	Status
Te Rarawa research is promoted among whanau, hapu, marae and findings are used for Runanga decision-making	Achieved - on an adhoc basis research is shared with stakeholders. Implementation of the Communication Strategy will improve the current practice. Evidence collected from research will be used where appropriate for both internal and external purposes.
Archive and Library plan developed	Carried over to 2011 - All documents held at the South road property have been relocated to Matthews Ave and are now stored in purpose built archival furniture. The project to implement a document management system is work in progress. Funding has been secured to develop policies on document storage.
Te Rarawa waiata are being used by hapu marae	Carried over to 2011 - work progresses slowly on the Waiata CD project, an initiative that received funding from the United Nations. Some marae and individuals have supplied traditional and contemporary waiata. Through hui new waiata have been composed specifically to celebrate Te Rarawa and ratification of the treaty settlement.
Te Rarawa supports initiatives which promotes the arts	<p>Achieved – Contribution and participation by staff and trustees were made to develop of a Maori Arts Strategy.</p> <p>Carried over to 2011 - The relationship with Northtec included providing facilities for the raranga course. Negotiations at the close of the year were underway to establish a three year Maori art and design course.</p> <p>Achieved - Participation in Te Ahu centre has ensured Te Rarawa has influence on the design of the facility alongside services that will be delivered from it.</p>
Commitment secured towards achieving Te Rarawa goals in Te Ahu facility development	Achieved – considered a key stakeholder, Te Rarawa will continue to hold representation at a governance level on Te Ahu Charitable Trust. A Memorandum of Understanding will cement the relationship long term.

**Te
Rarawatanga**

Te Rarawa
whanau and
hapu have a
strong
identity
grounded in
our history
and tikanga



Iwi Research and Development (IRD) group

The IRD group was established in 2005 to ensure that Te Rarawa research is coordinated, holistic and iwi focused. IRD meet approximately every six weeks. The group is guided by a research strategy (developed in 2009) which supports the Runanga strategic plan, links closely to areas of interest and need for whanau, hapu and iwi, and includes opportunities to build research capacity. A number of research projects and projects with elements of research have been undertaken with funding from various sources. These have included information and stories about Te Rarawa experiences, histories and perceptions of the environment, land use and practices, fisheries and fishing practice, waiata, education, community emergencies, sites of significance, and links with health and wellbeing.

During 2010:

- The “Family Interconnections: whānau assets and intergenerational transmission in Te Rarawa research project” was completed;
- We were successful in our bid for Action Research of Whanau Ora with a number of providers in Te Tai Tokerau. We are part of a research collective for the project with the Whariki Research group (Massey University) and Amokura (a Tai Tokerau-wide whanau violence group based in Whangarei);
- We successfully applied for a second round of funding from Nga Paerangi (National Services, Te Papa museum) to further develop the Taonga o Te Rarawa project which focus’ on policy and strategic planning for recording and archiving material;
- We have submitted proposals for research funding around kaumatuatanga, and Tangonge;
- We undertook a successful community consultation process resulting in agreement to proceed with a Te Rarawa Gout Research project alongside Otago University.

The year was capped off when our research work in the Far North was recognised by the Tangata Whenua Community and Voluntary Sector Research Centre. We were the recipient of a 2010 Community Researcher Award.



Hui participants assembled outside Ngai Tupoto marae during the gout research hui

**Hapu Plans: The development and implementation of Hapu Plans are supported**

Outcomes for 2010	Status
Action Plans have been developed from hapu plans	Not Achieved – Specific action plans have not been developed from Hapu plans, however, the Hapu plans that have been completed reflect the aspirations of marae and where there is capacity marae will work toward achieving their goals. Support will continue to be offered from the Runanga where requested. Concentrated effort will be focused in 2011 to complete outstanding Hapu plans, where there is marae support.
A draft iwi plan is developed for consultation	Carried over to 2011 – The nature of this plan has in the past had an environmental focus to it. There is enough information available locally, regionally and nationally to draft an iwi environmental plan. There are strategies underway or that have been completed across a range of areas that were identified as priorities. Until such time as these priorities are completed, planning towards the development of a long term plan will not commence. Within the Whanau Ora Collective framework there is potential for an evidence based long term iwi plan produced in a holistic manner covering cultural, social, health, economic and environmental wellbeings.

Hapu Development

Our Marae and Hapu develop their potential

Capacity Building: Whanau and hapu capacity built in line with hapu plans

Outcomes for 2010	Status
Te Runanga o Te Rarawa supports marae action plans as appropriate	Achieved - A range of services have been offered and accepted, particularly where the capacity or the capability of the marae requires external assistance to achieve their aspirations or to complete projects. Staff are encouraged to support their marae.

Resourcing: Resources and support are available for hapu development and for hapu/marae to access funding from other sources

Outcomes for 2010	Status
Hapu marae receive fisheries and profit distributions as per the distribution policy	Achieved - Marae continue to receive their share of fisheries interests.



Hapu and Marae are supported with funding issues	Achieved - Assistance and advice is provided to Marae on request. The nature of support ranges from supplying letters for funding applications, reviewing and assisting marae with book keeping to managing project budgets.
Opportunities have been identified for collective purchasing arrangements that benefit hapu marae	Partly Achieved - A number of initiatives have been made known to marae however none have these have been taken up.

Registrations: Hapu/marae are engaged in the compilation of the iwi registration database

Outcomes for 2010	Status
The iwi registration system has been updated and meets our needs	Carried over to 2011 - Significant progress was made throughout the year particularly in relation to determining the most effective and efficient means to manage the database.

Communication Plan: A robust communication plan that actively encourages engagement between hapu/marae and iwi is in place

Outcomes for 2010	Status
A robust communication plan that actively encourages engagement between hapu/marae and iwi is in place	Achieved - A comprehensive communication strategy was adopted by the Runanga in September. The plan sets out strategies to address the communication needs of marae, hapu, runanga internal and external covering funders, local and central government agencies, stakeholders and clients.

Hapu Development

Our Marae and Hapu develop their potential



Treaty Settlements: Settlement process completed and providing a foundation for economic development

Outcomes for 2010	Status
Settlement process for Te Hiku Forum and Te Rarawa progressed	Carried over to 2011 - Work has progressed at Te Rarawa and Te Hiku forum levels. The initiative to establish a beach governance board over Te Oneroa a Tohe commenced. It is hoped that a deed of settlement will be completed in time for ratification to occur in 2011.

Investment Strategy: A robust investment strategy creating a sound economic base and good returns is in place

Outcomes for 2010	Status
Te Waka Pupuri Putea produces an annual plan	Achieved – Annual Plan completed by Te Waka Pupuri Putea Ltd.

Employment: Initiatives that create jobs for iwi members within the rohe are supported and promoted

Outcomes for 2010	Status
Te Runanga o Te Rarawa is a key driver in growing employment opportunities for northland. All current contracts are retained and new contracts entered into	<p>Achieved - Completion of first year of beekeeping school with all graduating students in employment within the honey industry. Of the sixteen students who completed their studies, most were from Tai Tokerau. The school provides the only Apiculture course operating in New Zealand and Australia.</p> <p>Also provided community max opportunities in Kaitaia and Panguru.</p> <div data-bbox="694 1435 1067 1747" data-label="Image"></div> <p>At the opening of Te Kura Kohi Miere The School of Honey Gatherers LtoR: Blanche Murray, Saana Murray, Wayne Brown, Haami Piripi</p>

Economic Development

To grow sustainable economic base that will support Te Rarawa whanau and iwi

**Iwi Wide Strategies: A farming and forestry strategy is in place**

Outcomes for 2010	Status
Te Rarawa farming strategy developed and adopted	Achieved – Draft completed by Te Waka Pupuri Putea Ltd

Te Rarawa Schools: Iwi policy encourages Te Rarawa schools to provide quality access to Te Reo and Te Rarawatanga

Outcomes for 2010	Status
Good working relationships are maintained with all Te Rarawa schools	Achieved - A number of contracts require that programmes are made available and or delivered through schools. Schools who requested assistance from the Runanga to assist in the development of events were supported.
A Te Rarawa Education Strategy is development and implemented	Achieved - The environmental scan was completed and a contract was signed in December to produce an Education Strategy in 2011.

Recognition of Achievement: Our students are supported and recognised in the pursuit of higher education

Outcomes for 2010	Status
Annual taitamatane / taitamawahine awards are held.	Not Achieved.
Te Rarawa plays an active role with school trustees to develop and support initiatives towards higher academic achievement	<p>Work in Progress – Both staff and trustees are encouraged to become members on Boards of Trustees.</p> <p>As part of the Education scan, relationships have been formed with a view to consult and include educationalists and trustees in the development of the Education Strategy.</p> <p>Achieved - A designated place on the Board of Trustees at Kaitaia college continues to be allocated to the Runanga.</p>
Tertiary Scholarships are awarded to recipients	Achieved – A good number of applications were received in 2010. A ceremony was held to acknowledge and distribute scholarships to the recipients in December.

Education and Training; Matauranga

Te Rarawa people are educated to achieve their potential and support the development of the iwi



Training: Training is linked to our schools, promotes job opportunities in the rohe, underpins iwi development

Outcomes for 2010	Status
Te Runanga o Te Rarawa is engaged with education providers and other external agencies involved in training	Achieved – A focus in 2010 was to cement relationships with educational providers which included a mixture of tertiary, wananga and agencies such as the Ministry of Education and organisations operating within it.

Sector Engagement: The iwi is actively engaged with the Ministry of Education to enhance education outcomes within the rohe

Outcomes for 2010	Status
Te Runanga o Te Rarawa influences Ministry of Education decision making	Work in Progress - Attendance and active participation and contribution was made across a series of hui hosted by the Ministry of Education by Te Rarawa representatives. A formal Memorandum of Understanding was signed with the Ministry of Education.

Education and Training; Matauranga

Te Rarawa people are educated to achieve their potential and support the development of the iwi

**Community Needs: Development programmes and initiatives based on hapu/marae needs that improve access and enhance Whanau and community well-being are in place**

Outcomes for 2010	Status
Te Oranga services to Te Rarawa hapu are integrated to support and enhance Whanau and community well-being	Achieved - Te Oranga provide a matrix of social and health services to the hapu and communities of Te Rarawa, through community, school and individual engagement, this provides a forum for identifying gaps and needs therefore ensuring that programmes and services delivered are appropriate to these needs.
Whanau ora is the basis for Te Oranga, hapu planning and community hub projects.	Achieved - Whanau Ora is the ethos of all operational delivery.


Whanau and Hapu Services: Options for hapu services are developed to fit with community needs

Outcomes for 2010	Status
Service delivery is aligned with the strategic direction of Te Runanga o Te Rarawa	Achieved - The alignment of reporting against funder requirements and Runanga strategies continue to provide challenges for evaluating the delivery of services.
Services to the wider Te Hiku area are delivered as required.	Achieved - Service delivery continue to maintain, develop and foster relationships with other service providers, therefore ensuring a widespread of service across Te Hiku.
Health and social services delivered by Te Oranga meet quality standards of care	Achieved - Te Oranga encourage clients, whanau to participate in quarterly surveys, this way enabling clients, whanau to provide feedback around the level of service that they receive and an opportunity for quality improvement to be made.

Health and Wellbeing

To enhance whanau wellbeing and build strong communities

**Housing: A Te Rarawa Housing strategy with a focus on community owned housing is in place**

Outcomes for 2010	Status
Te Rarawa housing strategy aligns with identified need	Carry forward to 2011 –Changes have been made to central and local government agencies and services. As a result, this strategy has been deferred. Discussions between all parties have been positive with the development of a Strategy in 2011/2012.
Paa Kainga project progressed	Capacity Building Grant signed off in Wellington on 26 January 2010. A presentation in May at the Hui-a-Marama was well received by the Runanga and support was given to proceed and enter into an agreement with HNZC. 

Health and Wellbeing

To enhance whanau wellbeing and build strong communities

Youth Development: Young people are involved in establishing support programmes

Outcomes for 2010	Status
Whanau Ora goals are in place for tamawahine and tamatane	Carry forward to 2011 – Discussions have been held with other providers to ensure that tamawahine and tamatane needs are taken into account with any long term whanau ora strategy.
Te Rarawa tamawahine, tamatane have opportunities to communicate their needs to Te Runanga o Te Rarawa	Carry forward to 2011 – The Communication Strategy has accounted the need to improve communication into the Runanga and out to tamawahine and tamatane.

**Treaty Relationships: A Treaty based relationship with relevant Crown agencies**

Outcomes for 2010	Status
Memorandums of Understanding (MOUs) are in place outlining Treaty relationships with relevant Crown agencies	Achieved – Where it is identified that there will be benefit to Te Rarawa, formal agreements are entered into with Crown agencies and Local Government Authorities.
Treaty relationships with Crown agencies are regularly reviewed	Achieved – This is done as a matter of course, particularly where there are contractual obligations in place. In all agreements it is considered mandatory that the principles of Te Tiriti are a key component.

Te Rarawa participation at key levels of local authority activity

Outcomes for 2010	Status
Te Rarawa actively participates in local government decision making processes	Achieved – Participation and contribution to the decision making processes of Far North District Council and Northland Regional Council was made from technician level through to Governance.
Te Rarawa works actively to secure representation at all levels	Achieved – Where appropriate, operational representation is held on working parties and or committees where there is benefit to Te Rarawa.

Te Ao Maori: participation in local and national networks that promote iwi rights and development

Outcomes for 2010	Status
Te Rarawa is a recognised leader amongst te iwi Maori in relation to Maori well beings, including cultural, health, social, political, educational and economic development	Achieved – Participation and contribution is made by Te Rarawa at national, regional, district and local forums and where appropriate take the lead role.
Te Rarawa are represented on relevant boards and committees	Achieved - Where there are mandated seats allocated to Te Rarawa they are filled.
Te Rarawa representatives work collectively with a variety of organisations to achieve the strategic goals of Te Rarawa	Achieved – Representatives sitting on external boards are required to ensure that the aspirations and views of Te Rarawa are taken into account.

Political

That Te Rarawa show leadership and ensure that our voice is heard where issues concern us

**Runanga operates in a manner that is seamless, transparent, well managed and accountable to Whanau, marae, hapu, iwi and agencies in all areas of the operation**

Outcomes for 2010	Status
Te Runanga o Te Rarawa commences an agreed process for quality accreditation	Carry Forward to 2011 – The current quality plan was reviewed. It has been determined that a quality plan reflective of the aspirations of Whanau Ora will be developed as part of the overall whanau ora strategy.
Independent contract audit requirements are met	Achieved - High Trust contract audits completed.
Contract reporting to funders are achieved	Achieved - Six monthly monitoring meetings are conducted, this provides an opportunity for funders to provide feedback in and around the level of service that Te Oranga provide.
Regular service reports are made to the Runanga through the Chief Executive Officer's report	Achieved - Monthly reports are provided to the CEO who uses these to form the basis of formal reports through to Governance.

Te Rarawa Research is used to inform policy and direction

Outcomes for 2010	Status
The Iwi Research and Development (IRD) group coordinates research amongst Te Rarawa whanau, hapu and iwi based on identified needs	In progress - There are some research projects that have sat outside of the IRD group, particularly around service delivery. This said however, with the implementation of the communication strategy and development of seamless delivery across the organisation this will be looked at.

Effective communication: A robust communication plan that actively encourages engagement between hapu/marae and iwi is in place

Outcomes for 2010	Status
A comprehensive Communication Plan is in place for Te Rarawa	Achieved – A robust and comprehensive Communication plan was adopted by the Runanga.

**Runanga
Development**
That the
Runanga
functions well



Runanga Policies and systems are in place

Outcomes for 2010	Status
A policy manual for all aspects of the Runanga is developed and made accessible	Carry forward - systematic approach is taken to ensure that policies and procedures across all areas of the Runanga are appropriate, current and accessible. Where identified new policies are developed using best practise benchmarks.

Annual Planning and reporting cycle is undertaken in timely fashion

Outcomes for 2010	Status
The Annual Plan is drafted and agreed by November each year	Not Achieved – The draft was presented to the Runanga in November but not finalised within the agreed timeframes.
The draft Annual Report is available for comment two months prior to the AGM, and final report presented to the AGM	Not Achieved – Part of the draft annual report for 2010 was made available to the Runanga one week before the AGM.

**Runanga
Development**

That the
Runanga
functions well

**Kaitiakitanga: Tangata kaitiaki appointed by hapu/marae and applications for rohe moana are supported**

Outcomes for 2010	Status
Komiti Takutaimoana established and operating	<p>Ahipara Komiti Takutaimoana has now become an established and operating komiti with support from Te Runanga o Te Rarawa.</p> <p>Progress to establish Nga Pou Rahui o Hokianga as an operating Komiti had not been successful and shall be carried forward into 2011.</p> <p>The establishment of a komiti for the western seaboard between Mitimiti and Ahipara has not been taken up by those hapu marae and will be carried forward into 2011.</p>
Komiti Taiao / Whenua Ngahere established and operating	Achieved for the Warawara only – A komiti has been formed to further develop the establishment of the Whenua Ngahere Komiti involving all marae around the Warawara.

Environmental plans: iwi environmental management plans are developed and implemented

Outcomes for 2010	Status
Te Rarawa hapu marae are engaged in developing their own environmental plans	Achieved – A section dealing with the environment forms part of a hapu plan.
A Te Rarawa environmental planning process has been commenced	Carry forward – planning will be undertaken in 2011 to complete a Te Rarawa environmental plan. A number of national, regional and district plans are under review alongside a number of related pieces of legislation. It was considered prudent to defer this plan until such time as those other plans have been adopted by with the relevant agencies.

**Environment;
Te
Kaitiakitanga
o te taiao**

That we look
after our
environment
so that it
sustains our
communities



Strategic relationships: strong stakeholder relationships support kaitiakitanga policies and practices

Outcomes for 2010	Status
Te Runanga o Te Rarawa works collaboratively with policy makers and in relevant environmental forums to ensure Kaitiakitanga policies do not have a detrimental impact on sustainable hapu practices	<p>Achieved -</p> <p><u>Ministry of Fisheries</u></p> <p>Te Rarawa provides input into the development of the Ministry of Fisheries Treaty Strategy and the 2030 Fisheries Strategy.</p> <p><u>Ministry of Agriculture and Forestry</u></p> <p>Te Rarawa provided input and participated in the development of how the Ministry engages with Tangata Whenua.</p> <p><u>Ministry of Economic Development</u></p> <p>Te Rarawa responded to all proposed mineral and petroleum exploration consultations to ensure that Te Rarawa concerns were taken into account.</p> <p><u>Biosecurity New Zealand</u></p> <p>Te Rarawa provided input and participated in the development of a Tangata Whenua Roopu in response to Kauri Dieback and Marine Pests. Participated also in the development of a relationship monitoring framework for Government Agencies.</p> <p><u>Far North District Council</u></p> <p>Te Rarawa responded and participated in the development of proposed district plan changes that affect Te Rarawa hapu.</p> <p><u>Northland Regional Council</u></p> <p>Te Rarawa responded and participated in the development of proposed Regional Policy Statement changes that affect Te Rarawa hapu.</p>
Te Rarawa representatives advocate for hapu to minimise risks and manage expectations of Crown agencies in the implementation of Kaitiakitanga processes	Achieved - A number of resource consents, local government and central government consultations were disseminated to hapu for input and participate in Resource Management Act processes. These were then incorporated into a Te Rarawa response supporting hapu views and recommendations to minimise risks and manage expectations.

**Environment;
Te
Kaitiakitanga
o te taiao**

That we look
after our
environment
so that it
sustains our
communities

**Wananga: Whanau /hapu are up-skilled about kaitiakitanga and environmental management**

Outcomes for 2010	Status
Te Runanga o Te Rarawa supports marae/hapu/iwi kaitiakitanga and environmental management processes	Achieved - Three presentations were made on marae within Te Rarawa regarding kaitiakitanga and environmental management processes which included resource, fisheries and conservation management within Te Rarawa.

Development Controls: Systems are in place through resource management processes to ensure participation in decision making processes

Outcomes for 2010	Status
Te Runanga o Te Rarawa has an active role in local and central government agency consultation processes	<p>Achieved -</p> <p><u>Northland Regional Policy Statement</u> Te Rarawa was awarded the contract to consult with Tangata Whenua to develop issues and option into the Discussion Document for The Proposed New Regional Policy Statement (RPS) for Northland which is one of Northland Regional Councils key documents. It sets out what Northlanders want for our future and maps how Northland will get there.</p> <p><u>Biosecurity New Zealand</u> Te Rarawa participated in the development of a National Marine Pest Management Strategy alongside 20 other Iwi Representatives in Wellington. This was facilitated by Biosecurity New Zealand.</p> <p><u>Ministry of Agriculture and Forestry</u> Te Rarawa is an Executive member on the Tangata Whenua Roopu which was established to provide input and participation in the joint agency response to Kauri Dieback. The Agencies involved are Ministry of Agriculture and Forestry, Biosecurity New Zealand, Environment Bay of Plenty, Auckland Council, Northland Regional Council and Environment Waikato.</p> <p><u>Environmental Risk Management Authority</u> Te Rarawa has played a leadership role in maintaining and developing input and participation by Tangata Whenua into Hazardous Substances used in New Zealand and New Organisms entering the Country.</p>

**Environment;
Te
Kaitiakitanga
o te taiao**

That we look
after our
environment
so that it
sustains our
communities



Rubbish and recycling: Suitable waste disposal and recycling provisions are in place in our communities

Outcomes for 2010	Status
CSN waste services to the northern ward are maintained	Achieved - CSN continues to be the leading community recycler in the Country. Our current statistics show that on average CSN diverts up to 60% of waste generated in the Far North from reaching landfill.
Marae needs are identified and strategies developed	Carry forward
Educational resources are available to encourage appropriate waste disposal and recycling in hapu communities	Carry forward

Environment;
Te
Kaitiakitanga
o te taiao

That we look
after our
environment
so that it
sustains our
communities



WHAKAMAHARATANGA - 2010

Te Rarawa	Mika Robson
Te Kotahitanga	Annie Kira, Tame Ngawaka, Non Smith, Katie Raumati, Tipu Murray, Rapene Murray, Scottie Hokai
Korou Kore	Eliza Larkins , Huria Masters, Eva Nathan, Edward Smith , Celia Nathan
Pateoro	Caroline Isabella Tohu, Rangi, Scally Piripi, Martha Barber (nee Pihema), Helen Madison, David Arona
Rangikohu	Teresa Leefe (nee Lloyd)
Te Arohanui	Te Otene Pihema, Paul Makene, Shannon Tahere
Ngai Tupoto	Malcolm Walters, Eva Woodgate, Galvin Toki, Ada Beckham, Trevor White Allan Dixon, Winifreda Harris, Regina Kawi Craig, Bob Marriner, Jimmy Hancy, Sarah Beazley, Joe Harris, Maria Vujcich
Manukau	Roy Rider, Celina Smith (nee Tatana), Angela Tatana, Mita Walters, Geneva Matiu (nee Smith)
Ohaki	Tim Rudolph, Maria Waipouri, Danny Waipouri, Mihi Masters, Joseph Waipouri, Bessie Waipouri, Ernest Skinner, Janie Marsh
Roma	Alfreda Hamuera Vaka, Isa Beatrice Davis (nee Murray), Koro Moses, Basil Pickering, Barney Porter, Phyllis Harrison, Tony Perry, Polly Paratene, Tuohu Rutene, Heke James, Tailby Snowden, Tracey Ihaka
Ngati Manawa	Jack Tainui, Tiana Law
Te Uri o Hina	Sid Busby
Motuti	Francis Andrews, Makarita Moka, Walter Paparoa
Waihou	Robert Te Hira
Wainui	Horo Rider, Paraone Kerehoma, Ani Roberts
Matihetihe	David Taua, Esmay Pene, Major Waiomio, Matiu Hotere, Busby Cash (nee Martin), Elizabeth King, Joe Te Wake, Mata Te Wake (nee Martin)
Waiparera	Mary-Anne Smart
Tauteihiihi	Toko Mete
Pikiparia	Walter Haze
Owhata	Tangi Korewha (nee Heke)
Waiparera	Clara Norman (nee Boyce)
Waipuna	Charlene Murphy, Terry Spring, Saan Te Wake, Gerard Tipene, Maria Nganeko Pomare
Other	Jean Subritzky, Charles Bartman, Janey Marsden, Rihi Wallace, Wally White, Carol Wiki, Rebecca More, Dick Cassidy, Jim Julian, Bubby Reeves, Gerard Ngawati, Ross Norman, Sissy Davis, Julia Moses, Rangi Masters, Ellen Reihana, Robert Motu, Waenga Waenga



GROUP FINANCIAL STATEMENT AT A GLANCE

Net Profit	\$690k
Total Assets	\$13.2m
Marae Distribution 2010	\$101k
Revenue Growth	7.29%