



TE KUKUPA

SPRING EDITION, 2011



Te Rarawa Iwi members, legal representatives, and Crown officials, gather on the steps of Parliament after the initialling of Te Rarawa's Deed of Settlement on November 3rd, 2011. The initialling now opens the way for an extensive consultation process with Iwi members through until February 2012.

Featured in this edition

- Find out more about the Treaty settlement package? (pp. 12-15)
- Te Rarawa invests in Broadband. (pp.10-11)
- Matariki kaumatua ball. (p. 21)
- Noho Taiao for tai tamariki in January. Register now. (p. 19)



TE RUNANGA O TE RARAWA



Motuti Marae

Ko Tamatea te hiwi
Ko Waipapa te awa
Ko Hokianga te moana
Ko Ngāti Te Maara, Ngāti Tamatea ngā hapū
Ko Te Rarawa te taupoki, Ko Motuti te marae,
Ko Tamatea te whare nui

Preservation of marae heritage collection

Motuti Marae has for many years been the custodian of a number of historic manuscripts, sacred Catholic relics, and a collection of early printed material, photographs and maps pertaining to Maori, Hokianga and New Zealand history. When the marae was first built it included a separate space in the wharekai to house taonga, however over the years the collection has grown to a size where a separate facility to store and properly care for items is desperately needed. As part of our 10-year strategy we intend to establish a museum that will house this significant collection for the generations to come.



Above: Teresa Paparoa, Pā Henare, Sister Magdalene, Joanie Daniels, and Rongo Makara



Above: Old kohanga reo converted into temporary facility for taonga.

Te Kohanga

Two major issues relating to the current collections are storage and preservation. In response to the first, we have converted and renamed the old kohanga into a temporary storage and preparation site called *Te Kohanga* (The Nest). Hopefully many more initiatives can be hatched here. Funding from Pub Charity has enabled the marae to purchase archival materials for the preservation and conservation of an estimated 10,000 items.

Training

With the space and materials the next step was to acquire the know-how. Motuti whānau attended an intensive five day training workshop in preservation and conservation guided by whanau member, Whina Te Whiu. The sessions included recognising environmental issues, preparing a storage and preparation room for archiving, assessing the collection, active care of taonga, cataloguing standards and most importantly passing these skills on to others in the community. For many of us who have been worried about the care of taonga entrusted to Motuti it was magic. We now have the onerous task of cataloguing, preserving and recording information for each archive item!

Right: Joanie Daniels viewing museum items.



Future plans

The vision is that with care and skills this collection will become an invaluable resource for Motuti, Hokianga, Te Rarawa and Aotearoa. It will be an important repository of our history under the guardianship of our people. Once built the museum will include a research centre to be used by whānau, hapū, iwi, researchers, family historians, students and academics.



Above: Brian Paparoa and Bill Maxwell

Acknowledgment

We gratefully acknowledge the support and guidance of Whina Te Whiu who has willingly shared both her knowledge and time so that we may realise the dream. E te karanga maha, tēnā koe mo āu mahi.



Above: Clark Manukau & Whina Te Whiu



Above: Sister Magdalene, Clark Manukau and Brian Paparoa cataloguing.

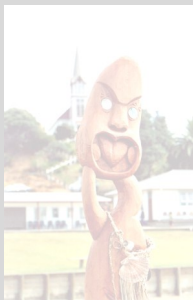
Wainui Marae

Ko Pukenamu te maunga
Ko Wainui te awa
Ko Ngati Moetonga, Te Rokekaa
nga hapu
Ko Wainui te marae
Ko Te Rarawa te iwi



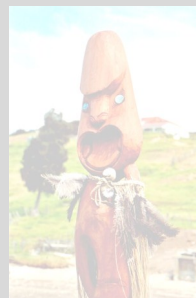
Whare taking shape

The old whare at Wainui has had a make over. It has been re-clad, re-roofed and its joinery has been replaced. You might recognise the windows and front door which were recycled from the Runanga offices in South Road when they were demolished to make way for Te Ahu Centre. Wainui has saved up their Runanga funding from the last few years and also obtained a Pub Charity grant to do the work.



Ngai Tupoto Marae

Ko Rakautapu te maunga
Ko Tapuwae te awa
Ko Hokianga te moana
Ko Ngahuia te whare
Ko Ngai Tupoto te hapu



Whanau business start ups

A number of Ngai Tupoto whanau have taken the plunge recently to set up businesses. We congratulate them for their initiative and wish them every success. We urge hapu and Iwi members to tautoko their new ventures.

Cafe culture

You will notice two new cafes that have opened up, one in Kaikohe and the other in Mangamuka. In Mangamuka Miriama Harris, daughter of Dave and Lizzie Harris, can be seen at the Mangamuka Roadside Café on the Mangamuka Junction. The café is a family affair with Miriama, her daughter Emily and partner Shane Robinson. Open weekdays, it's a great place to stop on your way north or for a catch up.



Above: Mangamuka Roadside Cafe

Below:

Miriama (Bonny) in action at the coffee machine.



Cafe Malaahi

On the main street of Kaikohe Julie Harris (nee Davis) and her whanau have opened up for business. The cafe named after Julie's late Mum has been a hit with whanau and locals alike. Out of town whanau members can enjoy a catch up with their coffee. The main team is Julie, her sister Angie Watling and Julie's daughter Alisha. They are supported by Shayne Deion, Kelly, Krystal and Malama. Julie's partner Jack did the fit out of the café and also had a hand in the fit out of the Mangamuka Roadside Café.



Shaz's Boutique in Kerikeri

Sharon McCreaney (nee Harris; daughter of Huriwaka and Dawn Harris) has set up a fashion boutique on the main road past the central shopping area in Kerikeri. Sharon offers a range of fashion for women, jewellery and other local products. You can also get a cup of tea and a catch up thrown in.

Top of next page: Sharon in front of her shop



Mangamuka Dairy & Takeaways		
Phone Orders Welcome 09 401 9184 Whanau 4 Ever Ltd		
Burgers (Onion Cooked unless requested raw)		
Hamburger	5.00	
Pepper, Onion, Lettuce, Tomato, Beetroot, Sauce & Mayo		
Cheese or Veg Burger	5.50	
Slice of Cheese or Egg, Pepper, Onion, Salad, Sauce & Mayo		
Beacon Burger	6.00	
Beacon, Pepper, Onion, Salad, Sauce & Mayo		
Beacon & Veg Burger	6.50	
Beacon, Pepper, Onion, Salad, Sauce & Mayo		
Steak Burger	6.50	
Steak, Pepper, Onion, Salad, Sauce & Mayo		
Steak & Veg Burger	7.50	
Steak, Egg, Pepper, Onion, Salad, Sauce & Mayo		
Fish Burger	6.00	
Fish, Onion, Salad, Sauce & Mayo		
Hawaiian Burger	7.50	
Hawaiian, Pineapple, Cheese, Onion, Salad, Sauce & Mayo		
Rolls		
Seafood	4.00	
Crabstick, Onion, Tartare Sauce		
Beacon & Veg Roll	5.00	
Beacon, Egg, Onion & Sauce		
Steak & Veg Roll	6.00	
Steak, Egg, Onion & Sauce		
Ported Sandwiches	5.00	
3 Fillings		
Chicken, Pineapple, Ham, Bacon, Egg		
Steak, Onion, Mushroom		
Optional Extras for Burgers	1.00	
Rolls & Sandwiches		
Chicken, Pineapple, Ham, Bacon, Egg		
Steak, Onion, Mushroom		
Deep Fried		
Medium Chips	2.00	
Fish	1.00	
Sausage	2.00	
Hotdogs	2.00	
Spicy Curry Roll	2.00	
Squid Rings	1.00	
Porterhouse Fritters	1.00	
Chicken Nuggets	1.00	
Fish Nuggets	1.00	
Garlic Butter	1.00	

Mangamuka Dairy and Takeaways

Kevin and Colleen Brown and whanau have purchased the Mangamuka Dairy and Takeaways. The A team is daughter Pip Brown and her tane, Tai Mei. The weekend crew is father Kevin Brown and son Graham with Mum Colleen helping out where she can. Check out the menu above.

Hapu development

Colleen is also a qualified mid-wife and has set up as an independent midwife. Her business is called Hapu Ora Midwives.

Left: Pip, Tai and Colleen take time out for a photo.

Morehu Marae

Ko Ongaro te maunga
Ko Rotokakahi te awa
Ko Kurahaupo te whare tupuna
Ko Waiomionga te wharekai

He moutamara

Te Uri-o-Tai has recently lost two 'wahine tino toa,' Charlotte 'Harata' Stevens (nee Hunia) and Sr Zeta (Elizabeth) Ihaka who passed away in August of this year. These two women, who were rangatira in their own right, were like 'chalk & cheese' in some respects but also very similar. They each earned the respect of Te Uri-o-Tai and those of the surrounding communities who knew them. Ma Harata who was in her late eighties was well up to the last few months. She had suddenly taken ill and was in hospital before being brought back to Pawarenga where she died on the 16th August 2011. Sr Zeta who had been sick for some time was brought home from hospital by helicopter and like Charlotte they were both given the opportunity to spend their last days with whanau. Sister Zeta passed away in hospital during Charlotte's tangihanga on the 21st August. What we thought would be a joint



poroporoaki turned out to be, 'raua tahi i roto i te wairua' – together in spirit. You can imagine the difference and the similarity of their poroporoaki. Both were fluent in te reo and ardent in upholding tikanga Maori. Harata carried out her role as 'he kuia rangatira with a free spirit showing her ability to generate 'harikoa'. Sr Zeta as a member of the Sisters of Mercy expressed herself in accordance with her role and like her whanaunga Harata would gain the respect of any audience. While they will be much missed their spirit will remain amongst us. E nga rangatira; haere, haere, haere. Hoki korua ki te kainga tuturu i hanga ai mo tatou te tangata. Ara mo te poutanga o te tinana. Ahakoa ko ngaro korua i te kanohi Kua ora tonu korua i roto to matou maharanga i a korua. No reira, moe mai i roto i nga ringa kaha o nga atua.



Waihou Marae

Ko Te Reinga te maunga
Ko Waihou-nui-a-rua te awa
Ko Waimirangi te whare tupuna
Ko Waihou te marae



Huritau

We have celebrated many huritau, both on the marae and beyond our rohe in recent months. The two Bens, Uncle Ben Thomas and Auntie Anita (Ben) Marsters celebrated their 80th birthdays. We also acknowledge Mere and Te Reinga Te Tai for their milestone birthdays, 70th and 21st respectively. All occasions saw whanau come together, reminiscing about the lives of the guests of honour celebrated, with heaps of aroha and manaakitanga.

Below:

Whanau in support of Auntie Ben Marsters who celebrated her 80th birthday recently.

10 day noho

It's been pretty busy through the winter and spring months. We held our first 10 day noho marae. Kaupapa included Kupe, whaka-papa, tito waiata and rongoa. Very popular with the whanau was our kuia kaumatua hui which saw purakau and hitori come to life. This kaupapa also brought to life 'te reo o te hau kainga'. Revitalisation of our reo is a biggy and we are privileged to have kuia kaumatua willing to steer this waka. While people's nerves were tested during to 10-dayer, things went remarkably well. We encourage and support any of our 23 marae to do the 10 day noho challenge. It's easy whanau, hei aha te buts and just do it!



BMM

The Bachelor of Maturanga Maori has been keeping the whanau burning the midnight oil. With panui and tuhinga in tow, it is the life of a committed tauira. A deeper understanding of tikanga and mahi rangahau is the reward. Nga mihi aroha to all who have supported us. No doubt, all the hard work will benefit both marae and hapori.

Meri Kirihiemete ki a tatou katoa.

Check out www.waihoumarae.com or Facebook on Waihou-nui-a-rua Marae.

Kawe mate, hura kohatu, matenga

In November we had the kawe mate of Gregory Matthews and hura kohatu of his sister Mihi Rudolph (nee Matthews). It was a massive turn out from the Matiu whanau, Te Uri o Tai and Te Mahurehure. Kiikii pai i to tatou marae. Ano hoki, he mihi aroha tenei ki te whanau Ngaropo me te hingatanga o Peter (jnr). E te tuakana, haere, haere, haere atu ra.



Above

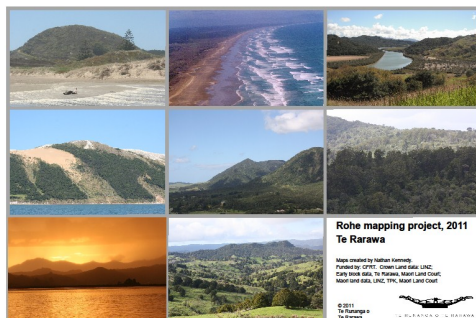
Whanau gather in front of Waimirangi whare at the celebration of the 70th birthday of Mere Te Tai and the 21st birthday of Te Reinga Te Tai held recently.

Te Rarawa rohe mapping project

A comprehensive set of maps has been produced as part of the research for the Treaty negotiations process. The maps are based on the original papatupu areas in the rohe of Te Rarawa and include information about mana whenua and current ownership. The A3 size map book is in colour and features 48 different areas and includes awa, maunga, and aerial photos. This is part of a GIS project and the Runanga now has a full GIS database of the whole of the rohe. This will provide opportunities for hapu/marae to access data and to enhance the information for their own use and planning. Copies have been made available to all marae.

Copies available

If you wish to get a copy of this resource we have limited copies available for \$40 plus \$10 postage. Please contact Hemi Toia hemi@terarawa.co.nz or phone 094081971



Melissa Williams awarded CLL writer's Award

Dr Melissa Williams has been awarded one of two 2011 CLL Writers' Awards at a ceremony held at the National Library in Auckland in September. Melissa is from Panguru and is the granddaughter of Matutina Murphy.

The award is one of the richest non-fiction prizes in New Zealand literature. Having completed a PhD thesis entitled "Back-home and Home in the City" in late 2010 Melissa will use to the award to complete her story of the historical movement from rural tribal areas into the city and back again by Te Rarawa from the Hokianga. The project is exciting because it draws on oral narratives of Te Rarawa men and women who migrated from Panguru, to Auckland city in the mid-twentieth century. The work will challenge existing accounts of the shared history of the iwi.

Melissa has recently commenced work as a historical researcher with one of New Zealand's leading independent publishing houses – Bridget Williams Books. Of the Te Rarawa project, Bridget Williams' comments – "This is an important work in the writing of Maori history. This book has potential for both general market interest while retaining its scholarly base".



Roma Marae

Ko Whangatauatia te maunga
Ko Karirikura te moana
Ko Te Ohaki te whare tupuna
Ko Roma te marae
Ko Tinana te waka



WAI 262 report from Tribunal after 21 years

Scenes from Roma Marae during the release of the WAI 262 "Flora and Fauna" claim report earlier in the year. Te Rarawa was one of six Iwi claimants represented by the late Del Wihongi (nee Witana). Iwi from around the country attended. There were emotional scenes as the original claimants, all but one of whom have passed on, were remembered. The only surviving claimant, Saana Murray from Ngati Kuri, has sadly passed away since the report was released.

Wai 262 is a claim to rights in respect of matauranga Maori, kaitiakitanga, and indigenous flora and fauna. The claim raises issues in respect of intellectual property rights that have not been addressed before. With the release of the report the claim becomes a national issue for Iwi.



More Te Rarawa achievers

John Te Iringa wins engineering scholarship

John Te Iringa (Te Rarawa, Atihaunui a Paparangi, Maniapoto) of KiwiRail in Whangarei is one step closer to achieving his career goals, after receiving a \$10,000 National Diploma Scholarship for Māori. John was awarded the scholarship by InfraTrain New Zealand, the Industry Training Organisation for the infrastructure industries. The scholarship will enable him to study for a *National Diploma in Civil Engineering (Applied)*. It was awarded by InfraTrain as part of its *Te Poutama Kaiahumahi* programme, which is run in partnership with Te Puni Kōkiri. The programme aims to strengthen the skills and qualifications of Māori working in the civil infrastructure industry through a range of initiatives, including scholarships towards an industry Diploma. John and seven other recent winners were presented with their scholarships by the Minister of Māori Affairs, Hon Dr Pita Sharples, in Auckland on 25 March. Speaking at the presentation, Dr Sharples said, "It really is wonderful to be back again to present another eight scholarships and recognise the ongoing success of *Te Poutama Kaiahumahi*. The winners represent the aspirations we want to stimulate within the wider Māori workforce. We expect great things from them in the future!"

Te Rarawa scholarship winner off to Dublin

Regan Taia, who affiliates to Te Rarawa Marae in Pukepoto, and was awarded a Te Rarawa scholarship in 2008, has won a scholarship to travel to Dublin. Regan, a third-year Bachelor of Education (Teaching) Huarahi Māori specialisation student in the Faculty of Education, at the University of Auckland is off to the Universitas21 (U21) summer school at University College in Dublin, Ireland. This is the first time a student from the Faculty of Education has won the scholarship award. Hosted annually, the U21 Summer School has a global theme and attracts some of the best students from the network of U21 universities in fifteen countries around the world. The 2011 theme is conflict resolution. Associate Dean (International) Dr John Hope says "this is a significant achievement in a very competitive environment. Teaching is a global profession and it is becoming increasingly important to gain an international perspective. This is a great opportunity for a potential educational leader to develop an international perspective that will benefit all students." For Regan, this will be his first time travelling outside Australasia. He is excited about taking our culture overseas, showing them the world we have grown up in, the world we live in and the values we share. "He whai wahi mo te ao katoa," says Regan.



Above
Regan Taia off to Dublin.

Left
John Te Iringa receiving his award from Dr Pita Sharples.

Te Rarawa invests in Iwi broadband initiative

Te Rarawa Broadband Investment

Te Rarawa representatives recently travelled to Kaipara to the launch of Taitokerau Networks Partnership, an Iwi owned Broadband initiative. Three years ago the Tai Tokerau Iwi Chief Executive group (with Kevin Robinson representing Te Rarawa) embarked on a bold and at times challenging mission to create the first commercially competitive and sustainable Iwi owned and operated telecommunications infrastructure in New Zealand. The aim is to use telecommunications as an opportunity to achieve socio-economic growth, sustainability and wellbeing for Maori in Tai Tokerau. Despite the many challenges, including some Iwi choosing not to invest, regional bodies suggesting that Maori should be end users only and not network owners, Te Rarawa, Ngati Whatua and Whaingaroa had the determination and belief to continue developing this ambitious and exciting opportunity.

Launch at Puatahi Marae, Kaipara

It was with great pride that the construction launch was held at Ngati Whatua's Puatahi Marae on SH 16, on the 14 September 2011.



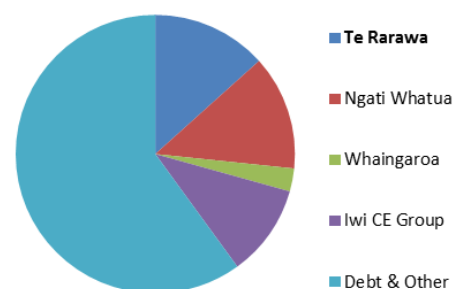
You will see on your travels between Whangarei and Auckland FX Network crews building our network, and you may even see our own Kirk Job (above centre) from Ngati Manawa, Panguru, who is part of the crew. Over 100km of the 165km build has now been completed. The initial build of this fibre optic ultra fast broadband network between Auckland and Whangarei is on track to be completed by the end of March 2012

at an initial cost of \$ 7.5M. Te Rarawa has contributed \$1M of the combined Iwi's \$3M investment. We expect revenue generated by the network will repay all borrowing for this initial build by 2017 which will then mean that this 100% Iwi owned network would be debt free. The objective is to expand this network throughout Tai Tokerau including Te Rarawa as soon as is financially viable, providing ultrafast broadband access for the rohe of Te Rarawa at the most affordable cost we will ever see.

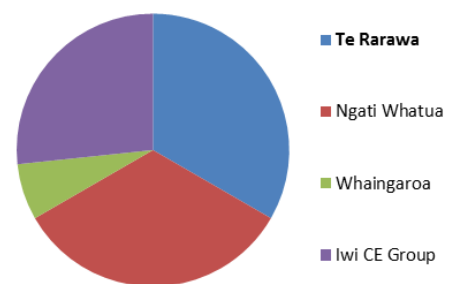
Taitokerau Networks Limited Partnership

Taitokerau Networks Limited Partnership is made up of Te Rarawa, Ngati Whatua and Whaingaroa as Iwi investors, and the business is managed by Datalight Limited, a company that has already developed several other broadband networks in New Zealand. The balance of project funding has been sourced from a major China based telecommunications company, and has been provided as debt funding, which allows 100% ownership to remain with Iwi. It is forecast that the debt on this part of the project will be fully repaid by 2017, as well as increasing the value of Iwi investment by 400%.

2011 Project Cost



2017 Est. Value (Debt Free)



Taitokerau Networks launched



Te Rarawa, Ngati Whatua and Whaingaroa Iwi gather at Puatahi Marae, Kaipara with partners and invited guests to launch the Tai Tokerau Networks Broadband project .



Taitokerau Networks limited Partnership Logo

The logo was designed by Ngati Whatua artist and carver, Bernard Makoare. The centre of the logo represents the pito mata (eye or navel), a metaphor for potential and seeking.



Above
Iwi representatives and partners holding a special ko or digging implement that was used to launch the new venture.



Above
Runanga Chairman Haami Piripi addressing the gathering at the launch.



Above
Datalight Partners Roger McDonald and Roger De Salis holding the ceremonial ko.

Summary of Treaty settlement package

On the 3rd November Te Rarawa's negotiators initialled a Deed of Settlement for our historical Treaty claims. This opens up the way for a consultation process through till the end of February where Iwi members will be briefed about the Crown's offer. This is called a ratification process and all affiliated Iwi members will receive information, be invited to attend hui and asked to vote on the settlement by late February. A Treaty settlement is made up of three main parts including:

- ♦ **An historic account**
- ♦ **Cultural redress**
- ♦ **Commercial and financial redress**

Historic account

The first part of the Treaty settlement redress is the historic account. It is made up of three parts:

- ♦ **Historic account**
An outline of the relationship between the Crown and Te Rarawa from 1840 to 1992 which charts the history of grievances and Treaty breaches.
- ♦ **Crown acknowledgments**
A summary of the Crown's acknowledgments of Treaty breaches and other Te Rarawa grievances.
- ♦ **Crown apology**
An apology from the Crown to Te Rarawa for the way Te Rarawa has been treated.

Cultural redress

Cultural redress provides recognition of the traditional, historical, cultural and spiritual connections Te Rarawa hapu have with the places in our rohe that are currently owned by the Crown or local authorities. It includes the return of land, recognition of mana whenua, restoration of kaitiakitanga and the establishment of Treaty based relationships that will enhance our place as whanau, hapu and Iwi. Cultural redress included in the Crown's offer to Te Rarawa includes the following:

- ♦ **Korowai Atawhai mo te Taiao: Co-governance**
A co-governance and co-management framework for the whole of the Department of Conservation estate across Te Hiku o Te Ika along with the other Te Hiku Iwi.
- ♦ **Warawara Whenua Ngahere i te Taiao**
Specific recognition of the mana whenua of Te Rarawa hapu in the iconic Warawara forest and provision for shared decision-making.

- ♦ **Te Oneroa a Tohe Statutory Board**
A statutory board made up of half Iwi representatives and half Crown representatives to manage Te Oneroa a Tohe (Ninety Mile Beach). Te Rarawa will be represented alongside the other Te Hiku Iwi.
- ♦ **Te Hiku Iwi Social Development Accord**
A multi-level agreement between Te Hiku Iwi and the Crown to advance the social circumstances of Te Hiku whanau, hapu and Iwi.
- ♦ **Return of sites of significance**
Eighteen sites of significance to be returned to Te Rarawa and six jointly vested in Te Rarawa and one or more other Te Hiku iwi totalling more than 2,500 acres (1,000 ha.)
- ♦ **Hokianga Harbour**
The deed acknowledges the importance of the Hokianga Harbour to the hapu of Te Rarawa and Ngapuhi and provides for the joint negotiation of cultural redress when Ngapuhi is in a position to enter negotiations.
- ♦ **Maungataniwha**
The deed acknowledges the importance of Maungataniwha to the hapu of Te Rarawa, Ngati Kahu and Ngapuhi and provides for the joint negotiation of cultural redress when the other Iwi are in a position to enter negotiations.
- ♦ **Statutory acknowledgements and statements of association for harbours and rivers**
Recognition of the association of Te Rarawa hapu and Iwi with our moana and awa to ensure local authorities take this into account.
- ♦ **Sundry matters**
A number of other items of cultural redress including place name changes, protocols with Crown agencies, cultural redress funding for archiving project, the promotion of relationships with Crown agencies and local authorities.

Commercial and financial redress

This redress recognises the economic loss suffered by Te Rarawa arising from breaches by the Crown of its Treaty obligations. The commercial and financial redress is aimed at providing Te Rarawa with resources to assist us to develop the economic and social well-being of our whanau and hapu.

- ♦ **Total commercial value**
A package worth between \$65-70M made up of cash, interest, land including discounted transfer values, and carbon credits.
- ♦ **Cash quantum of \$33.84M**
A cash transfer of \$33.84M, nearly \$7M of which will be paid on the signing of the Deed of Settlement.

Summary of Treaty settlement package cont.

- ♦ **Transfer of Crown farms**
Return of over 6200 acre (2479ha) Sweetwater Landcorp dairy farms, partially shared with Ngai Takoto, on very favourable terms. Return of 5000 acre (1970 ha) Te Karae sheep and beef farm at nominal cost.
- ♦ **Discounted land transfer cost**
An estimated \$25M discount on land transfer cost to reflect the reality that the land will never be sold.
- ♦ **Purchase of schools**
Purchase and lease back of the land of schools. Six at the time of settlement and three in a deferred selection process.
- ♦ **Purchase of other Crown properties**
The purchase of 16 Crown properties from the land bank and LINZ totalling approximately 60 acres (23 ha) at a negotiated transfer cost.
- ♦ **Deferred selection properties**
An opportunity to purchase up to five additional properties within two years including the Kaitaia Courthouse and schools.
- ♦ **Right of first refusal**
Rights of first refusal over surplus Crown land for the next 172 years. Arrangement with other Te Hiku Iwi over shared areas.

How you can take part in the ratification process?

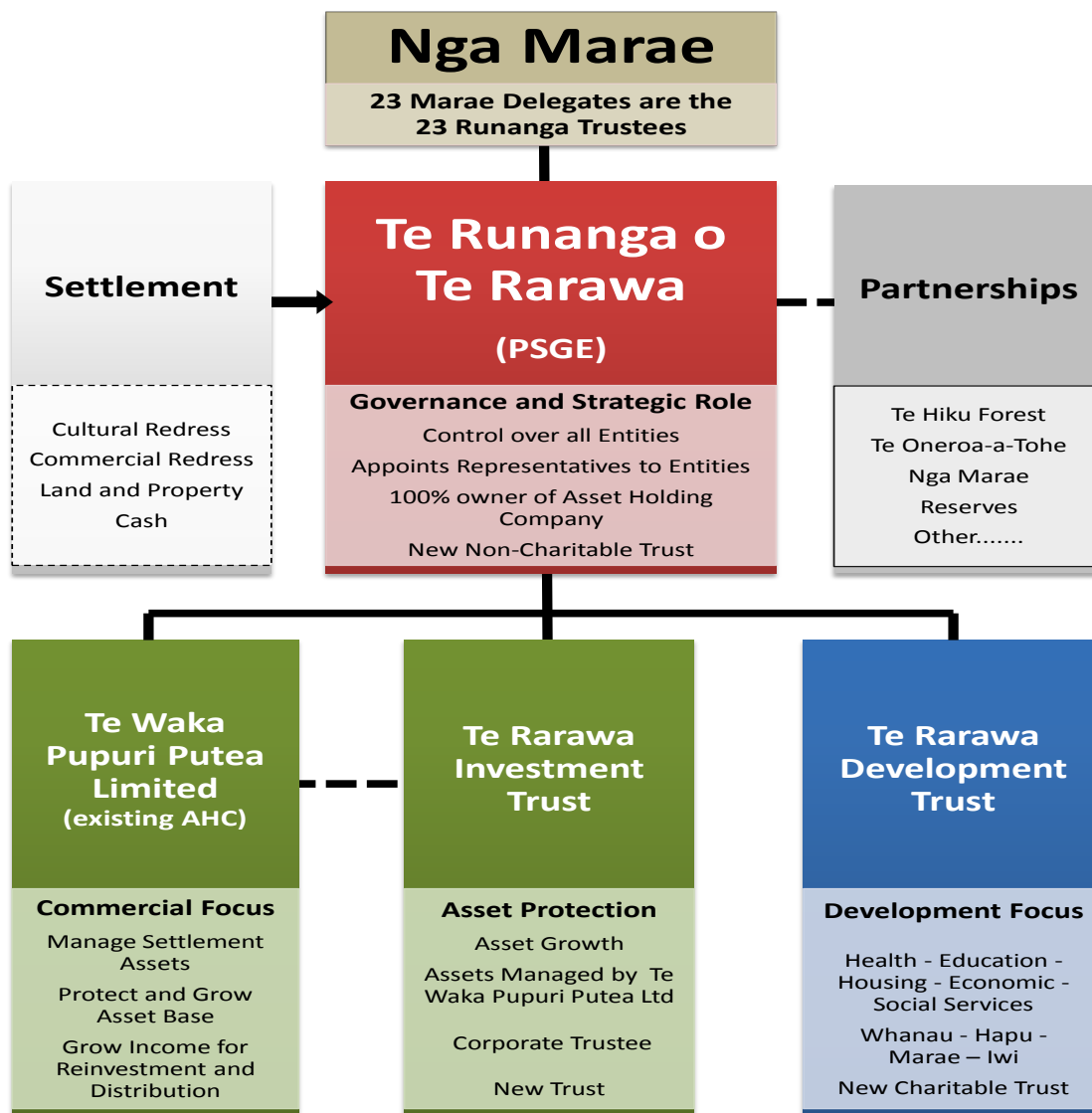
The ratification process is designed to make sure you get all the information relating to the Crown's settlement offer to Te Rarawa and that you can have a say.

- ♦ You can access information on Te Rarawa's website: www.terarawa.co.nz
- ♦ The deed of settlement and associated documents are on the Office of Treaty Settlements website: www.ots.govt.nz
- ♦ An information book will be posted to you in mid January. Make sure we have your current address. Check if your whanau have affiliated.
- ♦ Hui a Iwi will be held across the rohe of Te Rarawa and in Whangarei, Auckland, Hamilton, Rotorua and Wellington in January and February.
- ♦ All marae have been given the opportunity to have a hui to consider issues specific to each hapu/marae.
- ♦ If you have not yet affiliated to Te Rarawa through your marae go to Tatai ki Te Rarawa on the website, phone 0800 727292 or call in to the office at 16 Matthews Ave, Kaitaia or contact your marae delegate (details back page)

Post Settlement Governance

Before settlement assets can be handed back to Te Rarawa, a legal structure referred to as the Post-Settlement Governance Entity (PSGE) must be in place to receive them. The Crown will not return the assets to a charitable organisation which Te Runanga o Te Rarawa currently is. The PSGE outlined here meets the Crown requirements; is designed to be accountable, viable and sustainable, and provides the best opportunities to secure the future economic independence of Te Rarawa.

Te Rarawa has received expert advice to identify and develop the best options for moving the iwi forward. This model aims to achieve a simple, flexible and tax efficient structure that complies with legislative requirements as well as contributing to the inter-generational aspirations of Te Rarawa. To help you understand how the settlement resources will be managed after the settlement an overview of the proposed PSGE and how it merges Te Rarawa's current governance and operating structure has been outlined in the following diagram.



Post Settlement Governance cont.

Te Runanga o Te Rarawa as the PSGE

It is proposed that the Runanga with its restrictive charitable status be dis-established, and at the same time a new non-charitable trust be established with the existing 23 Marae delegates being the Trustees for the new organisation which will also be called Te Runanga o Te Rarawa. It will maintain overall ownership of all organisations as well as a governance and strategic role including the appointing of all representatives on the various organisations. All settlement assets (land, property, and cash) will be transferred to Te Runanga with cultural assets being retained until the most suitable entity is identified, and all commercial assets will be transferred to the Te Rarawa Investment Trust. The governance and strategic role of Te Runanga o Te Rarawa will be financially supported by returns from all commercial assets as managed by Te Waka Pupuri Putea Limited (Te Rarawa's Asset Holding Company).

Partnerships

Te Runanga o Te Rarawa will also be actively involved with a range of Iwi, marae and governance partnerships formed as part of this settlement. These have yet to be set up. They relate to the management and care of shared assets such as Te Hiku Forest, commercial properties, Te Oneroa-a-Tohe Board, and the Social Development Accord. Where whenua is being returned, the Negotiations Team will meet with relevant hapu/marae before settlement to determine how the land will be governed and managed.

Te Rarawa Investment Trust

All commercial assets (land, property, cash) received as part of the settlement will be vested into the guardianship of the Te Rarawa Investment Trust, a new trust. These assets will be managed by Te Waka Pupuri Putea Limited with the primary goals of protecting the asset, growing the asset and growing the income generated by these assets for reinvestment and distribution.

Te Waka Pupuri Putea Limited

The existing Te Rarawa asset holding company will hold all commercial assets required by the Maori Fisheries Act as well as other taxable company assets, and will manage all assets held by the Te Rarawa Investment Trust. The main focus for Te Waka Pupuri Putea Limited will be commercial, with an emphasis on protecting and growing the asset base as well as growing the income for reinvestment and distribution to support the activities of Te Runanga o Te Rarawa and the Te Rarawa Development Trust.

Te Rarawa Development Trust

This new charitable trust will have a development focus, including the inter-generational development of Te Rarawa people with a focus on the health, education, housing, economic and social development of Te Rarawa whanau, hapu, marae and iwi. To help it achieve its development objectives, the Te Rarawa Development Trust can be supported by Te Runanga o Te Rarawa via returns from all commercial assets as managed by Te Waka Pupuri Putea Limited (Te Rarawa's Asset Holding Company).



Left:

Te Rarawa Iwi representatives being called into the Grand Hall of Parliament Buildings before the initialling of the Deed of Settlement.

Paua reseeding day a boost for Tauroa

The Ahipara Komiti Takutaimoana has recently undertaken a paua reseeding day where 20,000 juvenile paua have planted on the rocks at Tauroa by volunteers. The Komiti was established in 2009 to coordinate mahi kaitiaki / customary management and its first task was to put a rahui (customary reserve) in place. This was implemented in November 2009. The committee had been concerned at the diminishing numbers of paua in the area and the unsustainable levels of taking that had been going on. The rahui has proved to be very successful and has received a lot of praise from hapu, Iwi and the wider community. Surveys in the rahui area have indicated that paua (and other species) are springing back but the rahui in itself is not large enough to prevent the inevitable decline unless other actions are taken. The committee decided to try a re-seeding project. Contact was made with Rodney Roberts of Oceanz Blue Paua Farm in Bream Bay, Ruakaka who right from the start was very supportive. About 30 breeding age paua were taken to Oceanz Blue and as a result about 20,000 juveniles have been reared. The juveniles are placed in empty adult paua shells with 50 juveniles per shell and placed in among the rocks and then additional empty shells are packed around for protection. For further information on the re-seeding project contact: Chairman Patau Tepania 09-409 4776 or 021 1848 653; or Laurie Austen 09-406 7403 or 021 1891 153



Ki o Rahi, Matariki and the French connection

A lot has been happening with Ki o Rahi in schools these past two terms. Firstly we held a very successful Ki o Rahi Tournament as part of the Matariki Muriwhenua Festival, a week long celebration hosted by Taipa Area School and Pepi Patch. The Tournament hosted 23 teams with schools travelling from Whangarei and Te Kao to compete in the event. The students at Taipa had been working closely with Wiremu Diamond to carve pou for the event which were revealed on the day of the games. Students, parents and teachers enjoyed participating and sharing skills on the day, with those schools attending tatu having a clear advantage. (Tatu was a negotiation between players and teams to agree on rules for the games to be played). Over all a great day was held with more than 230 tamariki participating the action. The hope is that for future games, a range of traditional games will be played, celebrated and enjoyed by whanau.

On another note, French Rugby and Ki o Rahi fan Bruno Veron from the coast town of Dieppe in Normandy; France came to visit the winterless North over three days in September. Bruno organized the hosting for the 2010 NZ Ki o Rahi teams during their tour in France, which gave NZ Ki o Rahi team member and Captain, Paulette Lewis the opportunity to return the favour, one year after the successful tour.

Bruno's visit included a tour up Te Oneroa a Tohe to the Cape, and school visits to Ahipara, Broadwood and Te Kura Kaupapa Maori o Te Rangi Aniwaniwa. On his visits Bruno shared with the students some interesting facts about France, French cuisine, rugby and Ki o Rahi. Bruno also offered the opportunity to set up pen pal exchanges with students in France, his wife is a teacher at the local school in Dieppe. The students and teachers were very grateful for the opportunity to have this exchange with Bruno and to share their Ki o Rahi skills on the ata-a-rangi (Ki o Rahi playing field).

Bruno is looking forward to sharing his adventures when he returns home to Normandy, and hopes to develop players in the Ki o Rahi Dieppe Organisation (KDO) and also contacts in New Caledonia in the hope of future cultural exchanges. To learn more about the game, we are running community Ki o Rahi games at Kaitia College bottom fields from 3.30pm every Wednesday from 28th September, or contact Te Oranga on 408 0141.

Below:
Bruno Veron
and students a
Manganuiwae



Above: Taipa students with carved pou preparing for Matariki Muriwhenua Ki o Rahi Games.

Noho Taiao January 2012

After the success of the Noho Taiao held in 2010 and 2011 another summer hui is planned for our tai tamariki in January. The hui will be hosted by Waiparera Marae, Rangi Point and run from 11th-14th January. Each year about 30 Te Rarawa tai tamariki from 10 schools as far afield as Te Waipounamu and Australia participate in the Noho Taiao.

- **Are you a secondary school student?**
- **Do you whakapapa to a Te Rarawa marae?**
- **Are you between 13 and 17 and going back to school next year?**
- **Do you have an interest in your iwi, science and the environment?**
- **Do you want to do something different over the summer holidays?**

If you wish to register yourself or someone for this noho please email Mina Pomare mpomare@panguru.school.nz or Paul White toreatai@xtra.co.nz with your details. We will send out a form for you to complete to ensure you get a place.

The noho is aimed at tai tamariki at secondary school with promise in science, technology or business drawn from across the iwi. The aim of the marae noho is to lift the horizons of the participants and show them the relevance of science to Te Rarawa and our iwi environment and future. It is hoped that the noho will inspire them to pursue careers relevant to Te Rarawa in science, technology or economic development so they can make a contribution in the future. Over a four day period we hope to create a focus for our young people, show them where they could fit in to our development and support them in their cultural development.

Ewai Yates Bowman Whakapapa

An enquirer is searching for family history involving these names, particularly concerning Waikaukau Ewai, who was the partner of Edward Sydney (Ned) Yates. Waikaukau was probably born about 1840, at Whangaroa and had 10 children with Yates. They were, Agnes, Huria, Julia (Bowman), Samuel Edward, Sarah (King), Marion (King), Clarence Sydney, Ethel (Morris), Florence and Egerton. There is a possibility that her father was a man called Ewai, as it was common at that time for Maori to use the father's first (or only) name as a surname for the child. Waikaukau died about 1904 at Kaeo or Whangaroa where she may have lived after Ned's death. There is a report that she had been living with one of her daughters, Marion wife of Richard King. For some reason, the names Te Whata, Brown, Tauroa and Aparā are used for her on the marriage and death certificates of some of her children. Please Contact us if you can help, as the enquirer would love to hear from anyone who is a descendant of any of the people mentioned or anyone with any knowledge at all. Thanks.

Desma and James Bowman

Tel 06 877 1798

email bowmans@ihug.co.nz

Tatana mokopuna

The mokopuna of Patariki and May Tatana (Whakamaharatanga and Rangikohu Marae) and Mary and Basil Sylva (Te Uri o Hina Marae) have made their whanau proud with recent achievements. Rhys, Pere and Awatea Wihongi, the tamariki of Edith Tatana, were born and bred in Herekino, and went to kohanga and kura at Broadwood before they moved to Auckland. Rhys who is 20 now is in his 2nd year studying to be a teacher at Te Wananga o Raukawa and works part time teaching te reo at nights. Pere who is 18 and in his last year at kura won Auckland regional Manu Korero 2011 both in Maori and English which took him to Nationals where he came away with 5 trophies. He was 1st in the English section, 1st for impromptu English, 1st aggregate sections Maori/English. 1st equal impromptu Maori and 2nd overall Maori section. In Ahurea kapahaka in Auckland he won Maori male Leader and their kura placed 3rd overall which puts them in Nationals next year. Potiki of the whanau, Awatea, aged 13 is starting to follow in the footsteps of her brothers having competed in Manu Korero 2011 junior Maori where she came 8th in Auckland. She is will also be performing in the kapa haka nationals next year.

Whakamatau Tinana Duathlon, Panguru

In June the *Whakamatau Tinana Duathlon* was held in Panguru. After an opening karakia by matua Pat Thomas, a safety briefing was given to participants highlighting the need to support one another. Participants wore visible singlets which were hard for on-coming traffic to miss. 66 competitors took part in a run/walk and cycle event which was great for the first ever Duathlon in the Hokianga. It was geared for those taking part for the first time. Some whanau want to make this an annual event, which will be great. It was a wonderful event very much enjoyed by those who took part. Spot prizes were given away; and all those that took part received a bag of goodies.



Above: Cyclists await the starting gun.

Below: Participants encircled by a rainbow heralding the start of the duathlon.



A special thanks to all the supporters and the sponsors and who made this day special and safe including Tai Tokerau PHO, Te Runanga o Te Rarawa, HEHA-Healthy Eating Healthy Action, Hauora Hokianga, Te Kura Taumata o Panguru, Kohukohu community, Panguru Development Centre, Rongo Makara, HEHA Steering Committee, Georgina Martin, Hayley Rauahi, Far North REAP, Joe Dargaville, Willie Paul, Whanau Ora Smoking Cessation o Hauora Hokianga, Tina Quitta, and Pat Dargaville.



Above: Participants waiting for Pat Dargaville to give the word.



Matariki Kuia Kaumatua Ball, Kohukohu

To celebrate Matariki, a Kuia Kaumatua Ball was held in the Kohukohu Town Hall. Whanau travelled from across the Hokianga and Northland to attend the event. Buses were provided from Mitimiti, Panguru and Pawarenga to ensure the kuia and kaumatua could enjoy the evening. The night was opened by matua Hone Ngapera who paid tribute to Pateriki Briggs who had passed away the week before. Patariki was instrumental in getting this kaupapa in place and was on the organising committee. Other speakers included Joe Dargaville and Paul Walters who spoke about the dances attended in the district in the past.

The hall was decorated beautifully for the evening and a fabulous supper was enjoyed by all. It was a brilliant evening and there was a wonderful atmosphere. The old style dancing was a feature with MC Russell Birt making sure that the band was playing to the crowd. The highlight of the evening was the crowning of Queen and King of the ball; May Lawson of Motuti and Remegius Dargaville of Panguru. They were a great couple.

A special thanks to all the sponsors including Hauora Hokianga, HEHA-Healthy Eating-Healthy Action, Tai Tokerau Primary Health Organisation, Te Runanga o Te Rarawa, Panguru Development Trust, Panguru-Motuti Trust, Thompson Whanau, The Waterline Café, Hokianga Harbour Hotel, Ani and Wayne

Leef, Richard & Christine Cook, Ada & Dawn Harris, Donna & Harding Morunga, Celia Duffy, Henry & Andrew Henry, Belle Dargaville & Bill Ashwell, Barbara Marinner and Kohukohu Village Arts.

A special thanks to the organising committee and all those who gave their support.



Left: Ngareta Harris and Bob Pirini with Queen and King of the Ball, May Lawson and Remegius Dargaville.





Na te Heamana

E kau ki te tai e,
e kau ki te tai e,
e kau ra e Tane i wahi ai,
te ngaru hukahuka o Marereiao.
Anei ano te ngaru hukahuka o tenei ao,
anei ano te ara tapu o Tane e wawahi ake nei,
kokiri kokiri ki te tau e.

It is with great pride that we present to you e te iwi o Te Rarawa the product of many years of difficult work on a journey that has lost many lives and cost many sacrifices to so many of Te Rarawa and other iwi of Te Hiku o Te Ika. Me mihi, me tangi ka tika. Tangihia i a ratou kua mene ki te po, tangihia ki a ratou o nga whakatupuranga hou. Kei hea ra nga tapuwae o toku tupuna? Kei konei ki, te huarahi na ratou kua taumau tonu, kua taumau tonu.

There is absolutely no doubt in my mind that the redress mechanisms contained in the settlement package that we are presenting to you at this time are the best that could have possibly been achieved given this particular point in our tribal history. Further I consider that what is proposed by this settlement is an opportunity that we as an iwi can not afford to pass us by. It provides an infrastructural capability that is essential for the growth and development of our (whanau, hapu lwi)

moana, while also providing an economic platform upon which whanau and hapu enterprise can prosper. It represents the next stage in our development and is tailor made for our current strategic approach to farming, forestry, and conservation which is focussed upon hapu and marae development. We have taken into account the many viewpoints and analysis provided to us over the past nine years of solid negotiations. In presenting this settlement package we are confident that we have left no stone unturned.

We have initialling the deed of settlement which now opens the way for further consultation with Te Rarawa about the settlement package. An agreement is not final until it is ratified and a number of hui will run over the next four months with Te Rarawa during this phase. We are happy to field any questions or to provide further information either at hui or via separate

Rautaki Reo Komiti

The Rautaki Reo Komiti has been going around the rohe of Te Rarawa having hui with our local hapu to try and form a picture on the state of our reo and tikanga. 'We need more reo and tikanga' is the call from all hapu and whanau. Ma to rourou, ma taku rourou, ka anga mua i tenei kaupapa rangatira. The committee is working on a te reo strategy for Te Rarawa and hope to report back next year. Watch this space.



Above: Rautaki Reo Komiti meet whanau at Ngai Tupoto Marae
Back L to R: Rachael Toki, Kim Campbell, Wayne Te Tai; Front L to R: Vicky Mare, Wendy Heywood, Mere Rawiri, Ra Heke, Barbara Marriner, Rose Harris, Whina Te Whiu, Maraea Brodrick.

Nga ra i mua



Launch of papakainga housing in Tai Tokerau; Ngati Manawa Marae, Panguru, 1986

The taumata await the arrival of Minister of Housing, Phil Goff to a hui marking the launch of the first papakainga houses to be built. The first recipients of homes under the scheme were the Boyce whanau at Te Karaka, and the Bristowe whanau in Whirinaki. Kaumatua and kuia above include Charlotte Cassidy, Dame Whina Cooper, Diane Noa, Simon Snowden and Atarea Noa along with Pā Hēnare Tate.

Whakamaharatanga

Me mihi kau ake ki te hunga kua hoki ki te kainga tuturu mo tatou te tangata. Ko ratou ena i hoki wairua atu ki Hawaikinui, Hawaikiroa, Hawaikipamamao. No reira haere e nga mate haere, haere atu ra.

Wainui: Henry peepi

Te Rarawa: Pita Motu

Motuti: Avis Misimake Topia, Toi Rapira

Ngai Tupoto: David Morgan, Thomas Hancy, Colin Morgan, Lance Wikaira

Morehu: Katie Hool (nee Rudolph), Charlotte Stephens, Eliza Ihaka (Sr. Zeta), William Taitimu

Matihetihe: Sonny Swaanenbeck, Martha Martin, Ariki Shelford, Joe Campbell, Josephine Hotere

Ohaki: Macrae DeThierry, Vincent Marsh, Matini Rurawhe-Trent, Molly Oxenham, Wiremu Campbell

Korou Kore: Pita Walters, Richard McManus, Hector Masters, Henare Natanahira, Frances Tepania

Ngati Manawa: Aaron Wijohn, Bryan Buckley, Morris Dargaville

Roma: Anita Tepania, Mere Snowden, Tebo Ngauma,

Basil Pickering, Lois Snowden, Norman Snowden

Owhata: Weha Tuakane (nee Koha)

Kotahitanga: Leonie Hokai

Waiparera: Sophie Wihongi

Te Arohanui: Puni Makene

Pateoro: Pateriki Briggs

Waihou: Peter Ngaropo

Also:

Patrick Littlewood, Luke Yates, Charlie Larkins, Katarina Heikoko,
Pa Christlo, Ta Paora Reeves, Saana Murray, Alice Palmer, Greg Veza

NGA MARAE O TE RARAWA

Korou Kore Marae, Ahipara
Delegate: Syd Nathan
Phone: (09) 4082656; sidntui@xtra.co.nz

Matihetihe Marae, Mitimiti
Delegate: Henry Tahana
Phone: (09) 409 5848

Morehu Marae, Pawarenga
Delegate: Frank Herbert
Phone: (09) 4095380

Motuti Marae, Motuti
Delegate: Joanie Daniels
Phone: 027 6814103

Ngai Tupoto Marae, Motukaraka
Delegate: Wendy Henwood
Phone: (09) 4057857; raywen@igrin.co.nz

Ngati Manawa Marae, Panguru
Delegate: Georgina Neho
Phone: (09) 4095344; georginaneho@hotmail.com

Wainui Marae, Wainui
Delegate: Tame Murray
Phone: (09) 4092073

Ohaki Marae, Pawarenga
Delegate: Sam Tecklenburg
Phone: 09 4080900; sam@terarawa.co.nz

Owhata Marae, Owhata
Delegate: Ra Heke
Phone: (09) 4095528; ra@broadwood.school.nz

Pateoro Marae, Te Karae
Delegate: Ramon Lyall
09 4055825; ramonlyall@slingshot.co.nz

Pikiparia Marae, Kohukohu
Delegate: John Roberts
Phone: 09 4055880; jp-taroberts@xtra.co.nz

Rangikohu Marae, Herekino
Delegate: Katie Murray
Phone: (09) 4093405
waitomo.papakainga@xtra.co.nz

Roma Marae, Ahipara
Delegate: Maryann Adlam
Phone: (09) 4094671; adlambiz@slingshot.co.nz

Taiao Marae, Pawarenga
Delegate: Malcolm Peri
Phone: (09) 4095101; pouoterangi@xtra.co.nz

Tauteihiihi Marae, Kohukohu
Delegate: Maiki Smith
Phone: (09) 4055826

Te Arohanui Marae, Mangataipa
Delegate: Jemaima Winikerei
Phone: (09) 4019920

Te Kotahitanga Marae, Whangape
Delegate: Richard Murray
Phone: (09) 4080900; indigenous@xtra.co.nz

Te Rarawa Marae, Pukepoto
Delegate: Dixon Motu
Phone: (09) 4082216

Te Uri o Hina Marae, Pukepoto
Delegate: John Walsh
Phone: (09) 4094748; john.walsh@pkffa.co.nz

Waihou Marae, Waihou
Delegate: Wayne Te Tai
Phone: 0276811236; Wayne.TeTai@twoa.ac.nz

Waiparera Marae, Rangi Point
Delegate: William Bercich
(09) 409 5013; willypeach@hotmail.com

Waipuna Marae, Panguru
Delegate: Abraham Witana
Phone: 0272243160; abe@terarawa.co.nz

Whakamaharatanga Marae, Manukau
Delegate: John McLean
Phone: (09) 4084316; fred55@kol.co.nz

Te Runanga o Te Rarawa	PO Box 361, Kaitaia, 0441 Phone: (09) 4081971; Fax: 4081998
Te Kukupa editorial team	Paul; email: toreatai@xtra.co.nz Rongo; phone. 09 4081971 or drop contributions off at 16 Matthews Ave, Kaitaia
Toka Tumoana	24-26 Matthews Ave, PO Box 361, Kaitaia Phone: (09) 4081971, Fax: (09) 4081998
Te Oranga	16 Matthews Ave, PO Box 341, Kaitaia Phone: (09) 4080141, Fax (09) 4080654
Printed November 2011	Website: www.terarawa.co.nz